

2/107 RGH

March 2007

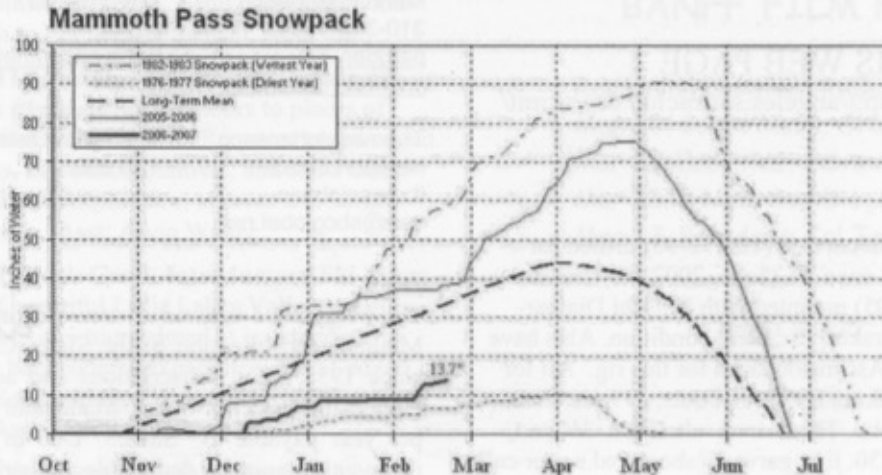
Issue # 799



HIGH SIERRA 2007 (not)!

Alvin Walters finds early season nirvana in Canada

**EASTERN SIERRA
CURRENT PRECIPITATION CONDITIONS
As of February 20, 2007**



MUGELNOOS STAFF

EDITOR
MUGELMAILER

John Anderson
Pat Holleman

EDITOR'S NOTES

This season hasn't been much so far in way of completed, scheduled SMS official trips. Most recent trips have been scrubbed. We have some new snow, finally, and it looks like we'll have a decent spring. I for one am looking forward to a good April and May in the Sierras. On a day hike to Baldy last weekend, Bahram noted that we only received local snow last season late in the year. Let's hope that's the case this year.

Thanks to Mark Goebel for the article on websites, Alvin Walters for his Canada experience, and Andy Fried for the Hole in the Wall map and tour..

John

NEXT ISSUE

The April issue deadline is April 10, 2007. All letters, photos, slides, or articles should be sent to Mugelnoos editor, John Anderson, 21717 Evalyn Avenue, Torrance, CA 90503. Materials can be sent by IBM disc or e-mailed to jay-deeay@yahoo.com. Electronic photos and articles are preferred and appreciated.

MEETINGS

3rd Tuesday each month – November through May (except December) 7:30 PM, Griffith Park Ranger Station Auditorium 4730 Crystal Springs Drive, Los Angeles, CA. Newcomers welcome!

SMS WEB PAGE

The link is: <http://angeles.sierraclub.org/skimt/>

For Sale:

2003 Atomic Tm:22 160cm skis (106-72-98) drilled for Fritschi bindings, used once \$125obo. 2002 BD Crossbow 171cm skis (115-82-105) mounted with Fritschi Diamar-Freeride bindings w/ brakes, excellent condition. Also have ski crampons and BD Ascension skins for this rig. All for \$575. Mens Lowa Strukura EVO AT boots, 299mm shell, fits size 8.5 to 9 \$100obo. Thermarest ultralight 3/4 pad, approx. 7/8 in thick, \$30. jim_garvey@sbcglobal.net or call 310-809-0792.

OFFICERS

| | |
|------------------------------------|----------------|
| Chair: Scott Koepke | (310) 413-8087 |
| Vice Chair: Steve Hessen | (562) 693-5012 |
| Secretary: Randy Lamm | (310) 319-1947 |
| Treasurer: Tom Marsh | (805)-498-9580 |
| Programs: Keith Martin | (310) 316-7617 |
| Outings: Heiko Knapp | (213) 385-8220 |
| Mugelnoos Editor: John Anderson | (310) 503-2542 |
| MugelSpinner: Thomas Johansson | |
| Conservation: Kathy Crandall | (661) 255-9661 |
| Mugelmailer: Pat Holleman | (310) 374-4654 |
| Asst. MugelSpinner; Reiner Stenzel | (310) 454-8787 |
| Asst. MugelSpinner: Owen Malloy | (760) 934-9511 |

SMS LEADERS

SMS Leaders and Officers:

Kathy Crandall (M)
Newhall
661-255-9661
kcran-dal@hartdistrict.org

Andy Fried (E)
Northridge
818-993-1891
andy-fried@earthlink.net

Mark Goebel
Huntington Beach
714-963-9384
Goebel.mj@verizon.net

Leslie Hofherr (Prov I)
Pleasanton
(925) 422-8255
hofherr2@lilnl.gov

Pat and Gerry Holleman (M)
Manhattan Beach
310-374-4654
patnger-ry247@verizon.net

Thomas Johansson
Newport Beach
thomasjohansson@sbcglobal.net

Heiko Knapp
Los Angeles
213-385-8220
heiko.knapp@web.de

Scott P. Koepke
Los Angeles
(O) 213-623-7820
(Cell) 310-413-8087
SPKoepke@aol.com

Randy Lamm (I)
Santa Monica
310-319-1947
randy_lamm@yahoo.com

Owen Maloy (I)
Mammoth Lakes
760-934-9511
owen_maloy@verizon.net

Keith Martin (M)
Palos Verdes Estates
310-316-7617
kwmartin@verizon.net

Tom Marsh (I)
Thousand Oaks 805-498-9580
qrtmoon@aol.com

Lorene Samoska (I)
La Canada Flint-ridge
818-952-3665
sam-sei@earthlink.net

Mike Seiffert (I)
La Canada Flint-ridge
818-952-3665
sam-sei@earthlink.net

Reiner Stenzel (M)
Pacific Palisades
310-454-9787
stenzel@physics.ucla.edu

Alvin Walter (M)
San Diego, CA
858-586-1982
awal-ter@pacbell.net

The Mugelnoos is a newsletter published by and for the Ski Mountaineers Section of the Sierra Club's Angeles Chapter since 1938. Send subscriptions and address changes to: Pat Holleman, 1638 6th Street, Manhattan Beach, CA. 90266 \$15 per year payable to "SMS." Due in October. Subscription payments are not tax deductible as charitable contributions.

Calendar of Events

All trips sponsored Ski Mountaineers unless otherwise indicated.

Mar 20 Tues Ski Mountaineers Monthly Meeting. Meet your ski friends, discuss trips and be entertained by a slide/video program. Newcomers welcome. 7:30 pm Griffith Park Ranger Station Auditorium, 4730 Crystal Springs Drive, Los Angeles.

Mar 29 - Apr 1 Thu-Sun M: (Ski Mountaineers, SPS) Mt. Lyell (13,114'), Mt. McClure (12,880'): Join us on a challenging winter climb of these classic Sierra peaks as we ascend the second largest glacier in the Sierra. Emblem celebrations will no doubt ensue! Skis and snowshoes welcome. Must have excellent snow camping skills, comfort on class 3-rock/steep snow, experience with ice-ax and crampons and travel on avalanche terrain, and a positive attitude. Be prepared for strenuous days and cold nights: total 26+ mi, 8400' gain. Approach via Rush Creek and Donohue Pass. This is a restricted outing open to all Sierra Club members. Please send an email w/ recent experience and conditioning, SC#, and completed Medical Form to Ldr: Jeff Dhungana. Co-Ldr: Reiner Stenzel

April 14-15 Sat-Sun TI: Sierra Day Tours: Ski to Cloud Ripper and Mt Goode from South Lake. Intermediate to advanced terrain. Ldr: Alvin Walter Asst.: tbd

Apr 17 Tues Ski Mountaineers. Monthly Meeting. Meet your ski friends, discuss trips and be entertained by a slide/video program. Newcomers welcome. 7:30 pm Griffith Park Ranger Station Auditorium, 4730 Crystal Springs Drive, Los Angeles.

Apr 21-22 Sat-Sun TI: Onion Valley Area ski tours: Ski (hopefully) on corn snow in the Eastern Sierra to Kearsarge Pass and Robinson Basin on day tours and car camp. Intermediate or better downhill skiing ability, metal edge skis with skins. Send experience, h/w phones, e-mail & addresses to Ldr: Mark Goebel. Asst Ldr: Tom Marsh

Apr 21-22 Sat-Sun TI: Ski Where the Best Snow Is: Ski tour to local mountains, the Sierra or desert peaks, where the snow conditions are the best. Typical destinations are Baldy, Gorgonio, Jacinto, cl 2 Sierra Peaks, White Mtns or Panamints. Location depends on road and snow conditions. Snow camping or car camping. Bring backcountry ski and camping gear. Intermediate to better skiing abilities required. Send experience, contact info, ride share info to Ldr. Reiner Stenzel. Asst: tbd

Apr 27-30 Thu-Mon TI: Middle Fork Bishop Creek: Ski up into drainage and make a base camp. Ski tours to places of interest, possibly including Mt. Wallace. Required metal edged skis with climbing skins, avy beacon, shovel, and snow camping gear. E-mail or call with experience, address and home phone to Ldr: Jim Crouch. Asst: Alvin Walter.

May 12-13 Sat-Sun TI: Rock Creek Introductory Ski Tour: Car camp, ski slopes of beautiful Little Lakes Valley and surrounding area. Intro SMS day tours aimed at intermediate or better skiers with some backcountry experience. Metal-edged skis & skins required. Send experience, contact, ride share info to Ldr: Mike Seiffert. Asst: Lorene Samoska

May 15 Tues Ski Mountaineers. Monthly Meeting. Meet your ski friends, discuss trips and be entertained by a slide/video program. Newcomers welcome. 7:30 pm Griffith Park

Ranger Station Auditorium, 4730 Crystal Springs Drive, Los Angeles.

May 19-20 Sat-Sun TI: Ski Where the Best Snow Is: Ski tour to local mountains, the Sierra or desert peaks, where the snow conditions are the best. Typical destinations are Baldy, Gorgonio, Jacinto, cl 2 Sierra Peaks, White Mtns or Panamints. Location depends on road and snow conditions. Snow camping or car camping. Bring backcountry ski and camping gear. Intermediate to better skiing abilities required. Send experience, contact info, ride share info to Ldr. Reiner Stenzel. Asst.: tbd

June 2-3 Sat-Sun TI: Ski Where the Best Snow Is: Ski tour to local mountains, the Sierra or desert peaks, where the snow conditions are the best. Typical destinations are Baldy, Gorgonio, Jacinto, cl 2 Sierra Peaks, White Mtns or Panamints. Location depends on road and snow conditions. Snow camping or car camping. Bring backcountry ski and camping gear. Intermediate to better skiing abilities required. Send experience, contact info, ride share info to Ldr. Reiner Stenzel. Asst.: tbd

Enjoy your summer. Stay in shape

**NEW SMS LEADERS WANTED/NEEDED!
NOW IS THE TIME TO SIGN UP!!**

Tired of the same leaders? Become a leader and schedule your own cool trips!

March 31 is the deadline to sign up for the April 14th seminar to be held in Griffith Park. An application is available at www.angeles.sierraclub.org/ltc (click on LTP application on the left) or in the back of the Schedule on page 74.

BANFF FILM FESTIVAL

Remaining showings in SoCal:

Mar 20, Costa Mesa, Orange Coast College

Mar 22-Encinitas, Adventure 16

Mar 23/24/25-San Diego, Adventure 16

Mar 27, Pasadena, Cal Tech Alpine Club

SKI THE WORLDWIDE WEB

By Mark Goebel

In Southern California we live in a Mediterranean climate, and backcountry (bc) ski gear for our local outdoor retailers is not a good profit line. Therefore, they don't carry it. Except possibly for Norpine Mountain Sports in San Diego, if you want to fondle the gear before purchase, the nearest shops to LA are in Mammoth Lakes. However, via the Internet, a nationwide/international array of shops, online vendors, and sources of information are as close as the nearest computer keyboard.

Below is a list of websites useful to bc skiers seeking gear, information, advice, or training. If you know of other good ones, forward them to the Mugelnoos Editor to be included in future issues.

Gear Suppliers:

www.mammothgear.com - Mammoth Mountaineering Supply is located on Main St., Mammoth Lakes, Ca. Nearest complete line of bc gear, and tele & AT rentals to SoCal.

www.rei.com - bc ski gear is available online.

www.sierratradingpost.com - discounted clothing and gear. Many bargains.

www.norpine.com - has a store in San Diego. Mostly xc & tele, but some AT.

www.mountaingear.com - carries a complete line of bc gear & clothing.

www.BlackDiamondEquipment.com - full line of bc ski and climbing gear.

www.marmotmountain.com - Marmot Mtn. Works – complete line of bc gear & clothing.

www.telemarkski.com - both tele and AT gear. Sells demo skis and boots.

www.backcountry.com - full line of gear. Frequent sales.

www.bentgate.net - Bent Gate Mtneering. Online catalog. Full line of bc gear.

www.thebackcountry.net - Lake Tahoe store. Full line of bc gear. Tahoe conditions and routes.

www.campmor.com - bargains on outdoor clothing and camping gear.

www.bndskigear.com - ski crampons for AT and tele skis.

www.climbingskinsdirect.com - online source for climbing skins at lower cost.

www.gearx.com - full line of gear, many sale items.

www.randogear.com - AT ski gear and accessories.

www.yoursole.com - low cost, semi-custom footbeds.

www.tognar.com - tools for ski tuning, wax, and much more.

www.usoutdoor.com - complete line of outdoor gear.

www.telemark-pyrenees.com - located in Spain, carries everything for the bc skier or mountaineer.

Information Sources:

www.wildsnow.com - Lou Dawson, guidebook author and 1st to ski the CO 14teeners. Loads of bc info, news, and everything you need to know about the Dynafit AT binding.

www.telemarktips.com - bc news, videos, forums for bc related discussions, trip reports, gear sales & reviews.

www.couloirmag.com - bc info, and discussion forums for gear, trip reports, gear sales, etc.

http://pweb.jps.net/~prichins/backcountry_resource_center.htm - Paul Richins, Jr., bc guidebook author & skier. Great source for info about the bc & many trip reports.

www.calskilibrary.com - Ingrid P. Wickins, author of "Pray for Snow, The History of Skiing in Southern California."

www.sierradescents.com - reports on bc ski descents, and gear reviews.

www.mammothsnowman.com - video reports on Mammoth Mtn ski conditions.

www.skisocal.org - Southland Ski Server: links to local ski areas and postings on conditions.

www.sgwa.org - San Gorgonio Wilderness Assoc. Check Bulletin Board for reports on conditions.

www.mtsanjacinto.info/ - conditions on Mt. San Jacinto.

www.mt-whitney.info/ - discussion board for Mt. Whitney, Sierra, SoCal mtns. & beyond.

www.mtbaldy.com - Mt. Baldy Ski Area site includes current temperature and wind conditions.

www.weatherunderground.com - great source for weather reports.

www.tahoebackcountry.net/index.htm - Lake Tahoe bc information and trip reports.

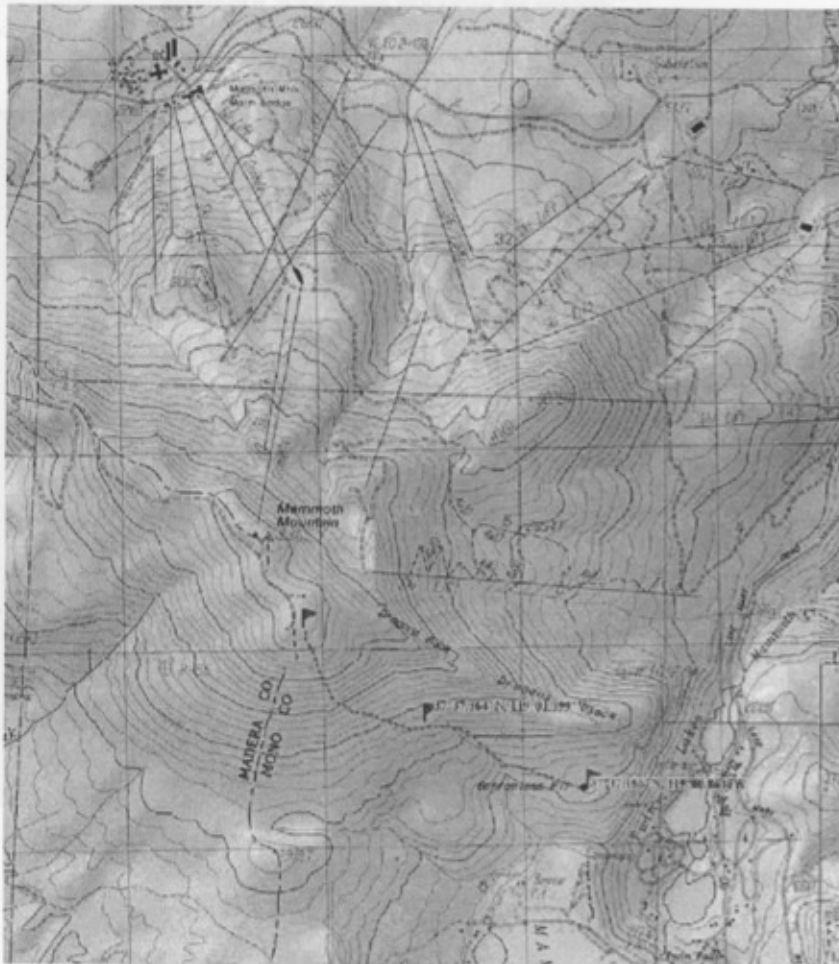
Backcountry Day Tripper

There are many easily accessible day trips available to the southern California backcountry skier. Mugelnoos will begin this irregular feature, the "Backcountry Day Tripper," to give you information on day trips available in the local mountains

"HOLE IN THE WALL"

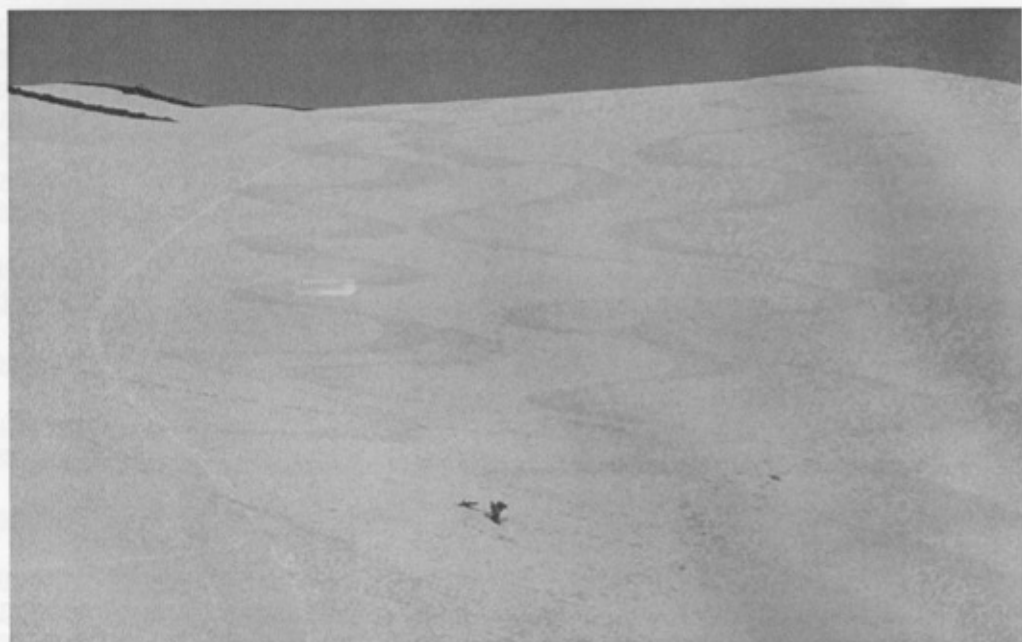
Hole-In-the-Wall under most situations is an easy backcountry trip, one you can use to introduce lift served skiers (with good skiing ability) to the backcountry as you don't need to skin up the mountain (you ride the gondola at Mammoth) or any aerobic capacity other than to fog a mirror (its all downhill). And it's spectacular: You ski through a natural rock arch.

First, leave a car at Twin Lakes (with a supply of adult beverages) in the Tamarack Lodge parking lot. Then drive to the Mammoth main lodge and take the gondola to the top. Find an SMS pal who has skied this before to keep from getting lost. After gearing up, ski down the back of the mountain, to the left (northwest), out-of-bounds from the ski area. Bear to the left, down the drainage. Where it widens out, look to the left for the gully that leads to the large rock formation with the hole in the middle. Ski down through the hole (a "no fall" zone: the runout ain't pretty), then ski down to Twin Lakes and your waiting car, and your adult beverages. You'll have something to talk about in the hot springs or Jacuzzi.





MORRISON CANYON, MAY, 2006
THIS IS WHAT IT'S ALL ABOUT



(Continued from page 4)

<http://angeles.sierraclub.org/skimt/> - website for the Ski Mountaineers Section

www.395.com - many links to info on Eastern Sierra campgrounds, lodging, wilderness permits, plus much more.

www.dot.ca.gov/hq/roadinfo/ - California highway information

www.mammothnordic.com - crosscountry ski trail info. for Mammoth Lakes.

<http://cdec.water.ca.gov/snow/current/snow/> - temperature, rain, and snowfall data for many California bc locations.

Backcountry Ski Huts:

<http://angeles.sierraclub.org/lodges/sanantonioskihut.html> - San Antonio Ski Hut.

<http://www.sequoiahistory.org/pearlake/pearlake.htm> - Pear Lake Ski Hut

www.ostranderhut.com - Ostrander Ski Hut

Avalanche Information:

www.esavalanche.org/ - Eastern Sierra Avalanche Center: Condition reports for Eastern Sierra.

www.avalanche.org/~uac/encyclopedia/index.htm - avalanche terminology & definitions.

<http://beaconreviews.com/transceivers/index.htm> - independent reviews of avalanche beacons.

<http://access.jibc.bc.ca/avalancheFirstResponse/index.htm> - online avalanche avoidance training.

<http://www.avalanche-center.org/> - more avalanche safety info., & links to reports on other areas.

www.bcaccess.com - supplier of safety gear & instruction on use of beacons, probes, & shoveling.

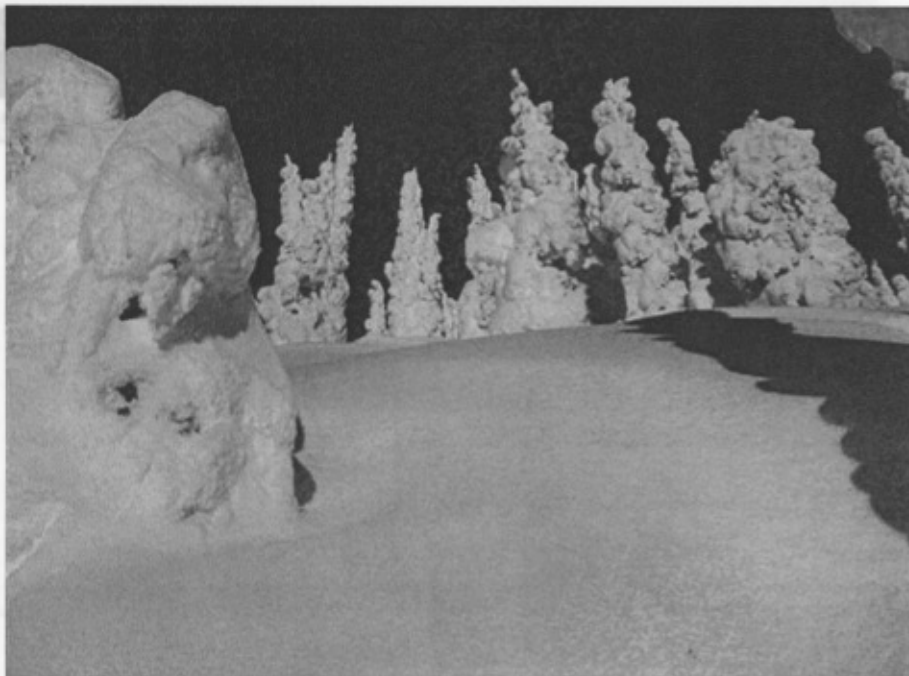
Mountain Guides & Avalanche Courses:

www.sierramountaineering.com - Sierra Mountaineering International, Kurt Wedberg.

www.sierramountainguides.com - Sierra Mountain Guides, Doug Nidever

www.sierramountaincenter.com - Sierra Mountain Center, S.P. Parker & Todd Vogel

www.bardini.org - The Bardini Foundation, Tim Villanueva



The Canadian forest near Rogers Pass,2007

Photo: Alvin Walters



FUTURE MUGELNOOS ISSUES 2006-2007

- Profiles on SMS leaders and other local backcountry ski personalities
- Essential books for the backcountry library
- Articles from other backcountry publications and websites



SEND TO MUGLENOOS

- *Suggestions for articles*
- *Stuff you want to sell*
- *Private trip reports*
- *Letters to the editor*
- *List of great backcountry skiing websites*
- *This is your publication. What ideas do you have to make it better???*

LOS ANGELES CA 900

22 MAR 2007 PM 1 T



Mugelnoos

Pat Holleman
1638 6th Street
Manhattan Beach,
CA 90266

Richard L. Henke
409 South Lucia
Redondo Beach, CA 90277-
SMS RCS R 2007