

THE **MUGELNOODS**

May 2004

Issue # 788

6/04

MUGELNOOS STAFF

EDITOR Lorene Samoska
EDITOR'S ASSISTANT Michael Seiffert
PRINTING Keith Martin
MUGELMAILER Pat Holleman

NEXT ISSUE: New Editor!

Next issue deadline is October 10th, 2004. All letters, photos, slides, or articles should be sent to Mugelnoos editor, **Heiko Knapp**, 2209 W. 12th Street, Apt. A, Los Angeles, CA 90006. Materials can be sent by IBM disc, CD, or e-mailed to heiko.knapp@web.de Electronic photos and articles are preferred and appreciated.

MEETINGS

3rd Tuesday each month – November through May (except December) 7:30 PM, Griffith Park Ranger Station Auditorium 4730 Crystal Springs Drive, Los Angeles, CA. Newcomers welcome!

OFFICERS

Chair: Reiner Stenzel (310) 454-9787
Email: stenzel@physics.ucla.edu
Vice Chair/Leader Records: Randy Lamm (310) 319-1947
Email: randy_lamm@yahoo.com
Secretary: Wally Drake
Email: Wdrake@altrionet.com
Treasurer: Tom Marsh (805) 498-9580
Email: qrtmoon@aol.com
New Webmaster: Thomas Johansson (949) 548-7182
Email: thomasjohansson@sbcglobal.net
Outings: Leslie Hofherr (310) 206-3929
Email: Leslie@admin.ucla.edu
New Editor: Heiko Knapp (213) 385-8220
Email: heiko.knapp@web.de
Programs: Michael Seiffert (818) 952-3665
Email: samsei@earthlink.net
Conservation: Kathy Crandall (661) 255-9661
Email: kcrandal@hartdistrict.org
Mugelmailer: Pat Holleman (310) 374-4654
Email: Patngerry@earthlink.net

SMS WEB PAGE

The link is: <http://angeles.sierraclub.org/skimt/>

The Mugelnoos is a newsletter published by and for the Ski Mountaineers Section of the Sierra Club's Angeles Chapter since 1938. Send subscriptions and address changes to: Pat Holleman, 1638 6th Street, Manhattan Beach, CA, 90266. \$15 per year payable to "SMS." Due in October. Subscription payments are not tax deductible as charitable contributions.

SMS LEADERS for Summer

Jim Crouch (I) 310-206-3929
San Diego, CA 92110 Leslie@admin.ucla.edu
619-223-9084
jim@saraitlim.com
Reiner Stenzel
Pacific Palisades
H (310) 454-9787
stenzel@physics.ucla.edu
Mark Goebel (E)
Huntington Beach
714-963-9384
goebel.mj@verizon.net
Alvin Walter (M)
San Diego, CA
858-586-1982
awalter@pacbell.net
Leslie Hofherr (Prov I)
Manhattan Beach

Calendar of Events

June 12-20 Sat-Sun SMS
TM: Washington Volcanoes: Sequel to last year's popular Oregon Volcano trip. Ski/climb on Mt Adams, Rainier, Baker and Shuksan. Summit attempts are private. Fly to Seattle, rent car, do day trips, car camping, long days of driving, skiing, and fun. Advanced backcountry ski skills required. E-mail experience, address, and h/w phones to Ldr: Reiner Stenzel. Co-Ldr: Alvin Walter
Jul 30 - Aug 1 Fri-Sun SPS /SMS
M: Mt Ansel Adams, Electra: Climb two remote, beautiful, and not frequently visited peaks in Yosemite N.P. Exploratory trip to consider A. A. for the SPS List. Approach from south with basecamp at Sadler Lke. 30mi, 6000' rt. Good conditioning and cl 3 rock experience required. Send e-mail with climbing experience, current conditioning, phones to Ldrs: Reiner Stenzel, Mark Goebel.
Aug 6-8 Fri-Sun SPS /SMS
I: Amelia Earhart (11,982') and Donohue (12,023'): Climb two fine peaks out of Lyell Cyn. Good conditioning required. Send e-mail with climbing experience, current conditioning, phones to Ldr: Leslie Hofherr. Asst. Erik Siering
Oct 1-4 Fri-Mon SPS /SMS
M: North Guard(13,327') and Francis Farquhar(12,893'): Enjoy High Sierra in the Fall. Friday backpack (6 miles, 5500' up) to Sphinx Lakes for base camp. Climb Saturday and Sunday. N. Guard (rt) is 8 mi/4kft; Farquhar (rt) is 4mi/2kft. Monday, pack out. Send SASE or email (preferred) to leader with class 3 experience, conditioning, your email. Ldr: Jim Crouch. Asst: Reiner Stenzel

FOR SALE

BD Resolution 180 with Silveretta EasyGo including brakes and crampons, Scarpa Denali 8 1/2 mens boots. Used 4 days. \$500. Barbara Sholle (562)429-2647 BSholle@aol.com
Scarpa T2, Mens Size 7 (Women's 8.5/9) used, \$50 OBO. Women's 9 Alico leather backcountry/telemark boots - fits 3-pin or cable binding, \$30 OBO. Email samsei@earthlink.net
2003 Atomic 160cm TM:22 skies (106-72-98). Drilled for Fritschi Diamir Titanal 3 AT bindings. Used once. \$200.00
Email: peninsulatug@earthlink.net

Cover Photo: Mike Seiffert with the Matterhorn, Pear Lake Ski Hut, Sequoia National Park, February 29th, 2004

2003-4 Season Summary *By Reiner Stenzel, SMS Chair*

As the 2003-4 ski season comes to an end it is worth looking back and summarizing the main events and to think what we can do in the next year.

Our main activity is skiing and, in spite of a below-average snow year, we had many fine outings. We had local trips (although not many due to the icy conditions), training trips (Ski clinic at Mammoth), hut trips (Pear Lake), one-day trips (Crater, Locke, Dunderberg, Dana, False White), overnight trips (Olancho, Mary Austin, Gibbs & Gaylor), an upcoming multi-day Sierra Crest tour, a basecamp ski trip in Mineral King, and an out-of-state trip to the Washington Volcanoes (Adams, Rainier, Baker, Shuksan). We will also be active in the summer by climbing Sierra peaks (Ansel Adams, Donohue, Carl Heller, Francis Farquhar). Many of our peak climbing/skiing trips are joint trips with the Sierra Peaks Section (SPS). As Chair of the SMS and Vice/Outings Chair of the SPS I tried to bring mountaineers and skiers together. On some ski ascents we had a happy mix of people on snowshoes, telemark and randonnee skis, and a snowboarder. Another sign that our outings program is doing well is that one of our active leaders, Tom Marsh, received the LA Chapter Outings Award this year. Congrats, Tom!

Our second effort was to increase the number of SMS new leaders. We made good progress and we have six provisional leaders this year (Jim Crouch, Prov M; Leslie Hofherr, PI; Jan StAmand, PI; Lorene Samoska, PI; Mike Seiffert, PI; Jonathan Meagher, PI). In the coming season most of the new leaders should become fully rated. There are several other candidates who could be fine leaders and need our encouragement and support to pursue it. This is a continuous effort since without new leaders we have no trips. Some of the new leaders will also run our sec-

tion and determine the style of our outings. Already we have some changes to report: We have a new Webmaster, Thomas Johansson, and a new Mugelnoos Editor, Heiko Knapp. We thank Owen Maloy for many years of excellent service as our former Webmaster and Lorene Samoska for an outstanding job as former Mugelnoos Editor. One can appreciate their effort only by doing some of their work, and I had that experience recently when updating and posting many trip reports on the web.

I should also mention that our SMS Trip Archives have grown and now fill three CDs with 100 trip reports, 1500 color pictures, movies, trip reports and maps. Every leader who has a trip report with pictures should send me a copy for inclusion in the file. The CDs are available for \$15 (please contact Reiner at stenzel@physics.ucla.edu), which should benefit the SMS Treasury. Skiers are also encouraged to look at their progress with the SMS List and to apply for recognition of List Emblems. As a start, a partial list of accomplished trips is given in the Archives (<http://angeles.sierraclub.org/skimt/text/MembAct.htm>).

We have plans to improve the SMS Programs at our monthly meetings. We will purchase modern projection equipment. The cost may be offset by an increase in membership fee from the extremely low level of \$7 to an appropriate fee of \$15/year. This may also allow us to invite outstanding speakers, update the Mugelnoos, create brochures about our activities, hence advertise our section and attract new members. These will be some of the activities of the next Central Committee.

In summary, we had an active year with many good trips and positive developments. Thanks to all leaders, the Central Committee and Officers for all your great contributions.

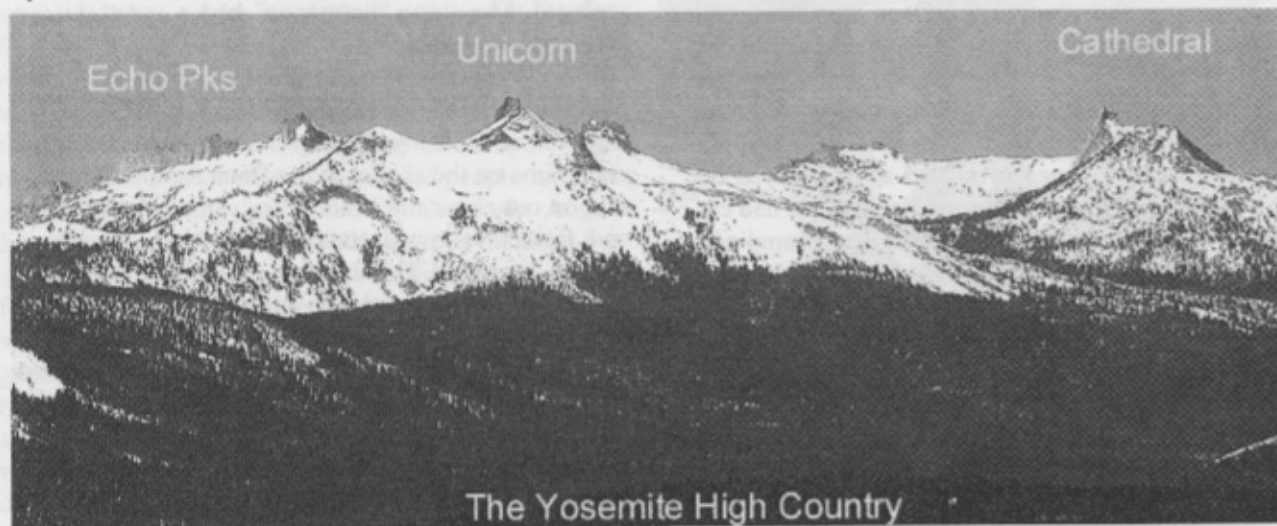


Photo taken on the Mt Gibbs trip, page 4.



Gibbs and Gaylor

May 1-2, 2004 by Jonathan Meagher

This joint SMS/SPS trip was planned to take advantage of the opening of Hwy 120 to Tioga Pass, to get easy access to some great skiing in the Tioga Pass/Tuolumne Meadows area. Eight people met Saturday morning at the top of the road at Tioga Lake, the eight included: Wally Drake, Carmen and Jim Garvey, Thomas Johansson, Angel Ocana, Eric Watts, and myself on a first lead trip with Reiner Stenzel as my assistant leader. The road was closed half a mile before the Park entrance.

After the usual trailhead organizing we headed up the hill towards the Dana meadows, with the plan to find a camping spot and continue to Mt Gibbs with daypacks. Instead of circling around through the meadows we took a more direct route through the trees following the base of the Dana plateau. Some steep slopes with hard snow delayed our progress. By around 10.30am we decided we had carried our heavy packs far enough and setup camp on a bench overlooking the Dana meadows, close to Dana ridge running down to the Dana Fork. Carmen decided to stay in camp and the rest headed off more briskly towards the Dana Fork. The Dana Fork drainage was narrow to start with but higher up it opened out into a large snow-filled cirque with sparse trees, great skiing.

As usual by this time Reiner was powering

ahead since otherwise it would get too late for a summit attempt. Reiner, Eric, and Angel made it to the summit of Mt Gibbs via a rocky ridgeline after having climbed up as high as possible on skis. They ascended the ridge 0.5 mi west of the summit, which involved a short class 3-rock/snow scramble. Then they followed the dry ridge to the 12,773' summit. The views were great in all directions but there was no summit register. According to info from the SPS, the registers on Dana and Gibbs vanish often due to the heavy traffic in the summer, hence are no longer replaced. The three "hermanos" had a great ski run down into the Dana Fork.

Wally and Thomas skied up to the ridge and then skied directly down to Jim and I, waiting below. The four of us enjoyed the great mid-afternoon snow conditions on the ski down the Dana fork, before putting on our skins and heading for camp. Angel, Eric, and Reiner followed some way behind, staying in contact by radio. The evening proved warm enough for Eric to take a quick shower to freshen up after a warm day and mosquitoes to appear around dusk.

Sunday morning dawned clear and sunny. Surface hoar sparkled in the sun. We packed up and headed out around 7.30am, back towards Tioga Lake and our cars. This time to kept to the meadows the whole way and made much better time, taking our



Thomas, Carmen, Jim, Jonathan, Eric, & Wally, Reiner at Base Camp

skins off at the park entrance for a short ski down to the car at Tioga Lake.

A large crowd of skiers/climbers was at the road end and we missed to see the other SMS group (Mark and Randy's group) heading up to Mt Dana. We dumped our heavy packs, put on light daypacks and decided to go for a quick ski tour up Mt Gaylor. Skis were put on straight away after climbing the roadside snow bank. We were able to skin up the whole way on the southeast side, although it got a little narrow just before making the east ridge. This route avoided most of the crowds of people and the snowmobile towing lazy skiers up the peak. Angel, Eric, Thomas, Reiner, and Wally climbed the short but steep summit, while Eric and I rested on some rocks for the ski down. We skied down the northeast face, which had some short steep sections, with the snow getting heavier as we descended. After a couple of binding releases we were back down at the road. A short hike brought us back to the cars before 2pm. It was a fine ski weekend. In Owens Valley it was 90+ degree summer weather.



Mt Laska with Thomas Gaylor shown by the arrow to the left

Blue Couloir by Michael Seiffert

What's the best way to start a ski trip? Well, perhaps tennis shoes and hiking on dry pavement don't immediately come to mind, but such was the start of my provisional leadership trip to the Blue Couloir. Fifteen of us (Bahram Manahedgi, Ted Lenzie, Gil Estrada, Don Sparks, Barbara & Dave Sholle, Pat & Gerry Holleman, Keith Martin, Paul Harris, Fred Reed, Jim & Carmen Garvey, Lorene Samoska, and myself) started out at the Winter closure locked gate on Lake Mary Road. Plows had worked the road for the previous week, and the road was bare and dry, but still not open. After introductions and signing in we were about to head up the road when a large truck with gate access pulled up. For a few minutes we thought Bahram might negotiate a free ride for us in the back until the driver's supervisor quashed our hopes.

We hiked the road up through Coldwater Campground, then put on our skis for a nice tour up to Emerald Lake. We contoured around below the lake and had a rest break after a brief ascent. The snow was quite firm and somewhat suncupped. The day was partly cloudy and cool. I had assurances from a ski bum in town that the snow quality improved above 10,000', so on we went.

The snow was still quite firm as we reached the bottom of the couloir, but generally of better quality. A few of us headed up to the top, while the rest decided to stop and begin the lunch festivities. After resting and eating, the sun came out and the snow softened nicely and we had a nice run down from the top.



Looking up at the Blue Couloir



The perfect way to start a ski trip

Bahram, Ted, and Gil deserve special mention; they had energy for a double serving of Blue Couloir.

On the way back, we had a mellow run down through open terrain until tighter turns were needed through the trees. The walk back along the pavement gave us a chance to chat some more and get to know one another better. This was really a great group of people to ski with—thank you everyone for a memorable trip.

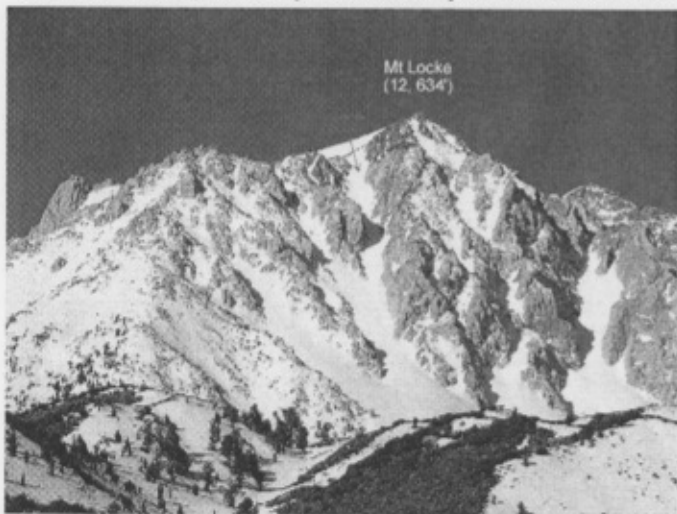


Bahram and Keith. Looking down from the top of the Blue Couloir. Lake Mary is below.

Wahoo Gullies by Reiner Stenzel

After 7 years the SMS skied the Wahoo Gullies again. They are located on Mt Locke, unofficially named after climber and skier Bob Locke, and marked only as peak 12,634' on the Mt Tom topomap. The non-listed peak is located 1.5mi SE of Mt Humphreys and has many fine gullies. The center one is an almost 3000' couloir and a desired goal for many ski mountaineers. Between Mt Humphreys and Emerson there are many other fine couloirs to ski. Many can be done as day trips with car camping in the upper Buttermilk area.

On Sat, 4/10, we met at the intersection of the Buttermilk Rd and Hwy 168 7.5 mi W of Bishop. We means Wally Drake, Angel Ocana, Brian McElwain, Leslie Hofherr, Heiko Knapp, Brad McHose and co-leaders Randy Lamm and Reiner Stenzel. We drove up the unpaved road to close to the McGee Creek, consolidated into two high-clearance 4WD cars which made it across the stream and close to the end of the dirt road. From there we hiked a short distance through brush to the snowline at about 9400'. Some skinned up, most continued to hike. As we climbed into the Wahoo Gully we used boot crampons on the hard snow. It took about 2 hours to climb the Wahoo Gully. At the top we crossed a band of rocks, then ascended the SE facing snowfield to the summit. By 12:30pm six of us made it to the top. The views from the summit were outstanding: Mt Humphreys with its large snowfields, Mt Emerson with its famous N facing couloir, in the distance the White Mtns and many fine Sierra peaks were all in clear sight. Although it was sunny a cold wind was blowing. We did not find a register on this unlisted peak. So we made a small cairn and placed a plastic bag with a signed sheet into it. We took many pictures, relaxed, ate lunch, and talked to the others by radio. By 1:30pm we descended, being sure to have now soft snow in the gully. But the cold wind and shallow angle to the sun never softened the snow. Thus, it was a tough ski run down on crusty snow with obstacles from old boot and ski tracks. The randonnee skiers had it easier than the telemarkers. The lower half of the gully was fine and we had a great time skiing out of it. We regrouped and enjoyed the afternoon skiing on fine spring snow. Then we retraced our route to the cars and were back by about 3pm. Since we planned to ski in the



Mt Locke with Wahoo Gully shown by the arrow to the left



Heiko Skiing Wahoo Gully

area the next day we car camped on a dead-end dirt road near the McGee Creek. We had a relaxed afternoon and evening.

On Sun morning, 4/11., after a chilly 15F! night, we returned to the Wahoo "trailhead" and started hiking by about 9am. Our plan was to explore the Checkered Demon chutes and the southeast facing snowfields east of Mt Humphreys. We ascended along the north side of Mt Locke over moraines to the N face of the Checkered Demon, which is marked as peak 13,121' on the topomap. There are two impressive couloirs, the wide Kindergarten Gully and the narrow and steep (45deg) Checkered Demon Gully. The two are separated by a colorful rock face. While we were waiting for the rest of the group to catch up, three of us decided to ascend the Kindergarten Gully. Heiko blazed a switchback trail, closely followed by Angel and Brad. They were pleased to find soft powder snow in 70F shirt-sleeve weather rather than crust in the gully. Turn-around time was 1pm and the three had a blast skiing down. Then the whole group skied the large bowl east of Humphreys. Some had excess energy and reclimbed the long southeast facing slope east of Pk 13,151'. There was nothing but wonderful corn snow. We all enjoyed our turns down some 3000 feet on corn snow. It was some of the best skiing terrain. After a short hike we were back at the cars by 3 pm. An hour later drove down the Buttermilk Rd to Bishop, where some of the group feasted at the Taqueria, and the others found themselves five hours later back in LA. It was a great weekend of spring skiing with a group of strong and enthusiastic skiers.

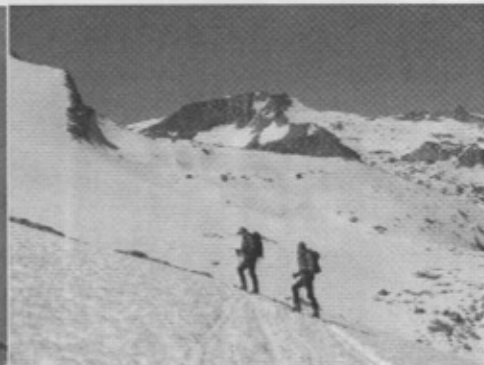
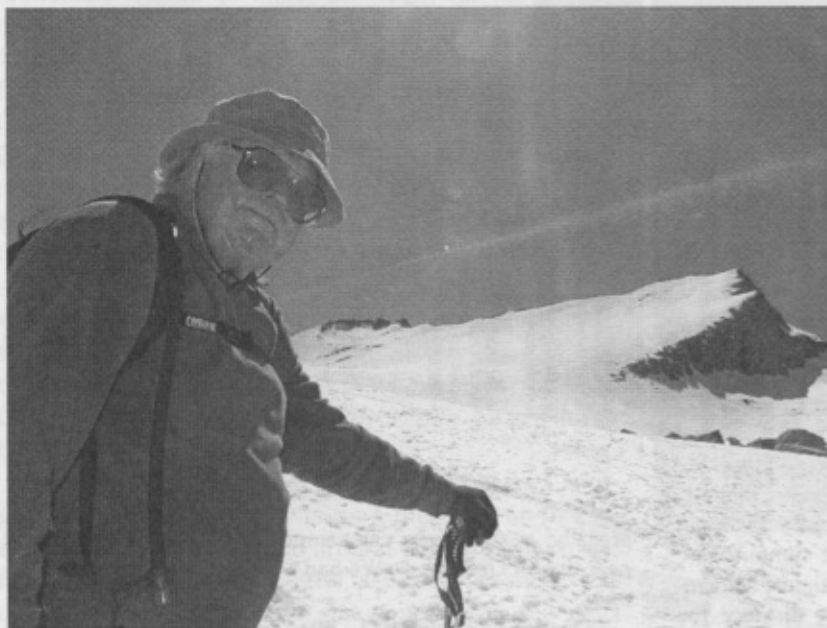
For some great movies of Wahoo Gully skiing, please see the website at <http://angeles.sierraclub.org/skimt/trips/wahoo04/wahoo04.htm#mtlocke>. Also, the movies are available on the CD set of SMS archives available by contacting Reiner Stenzel for \$15.

SMS Central Committee: The new central committee members for next ski season are: **Leslie Hofherr, Randy Lamm, Wally Drake, Lorene Samoska, Reiner Stenzel, & Tom Marsh.**

New Mugelnoos Editor: **Heiko Knapp**

New Webmaster: **Thomas Johansson**

Congratulations!



Falsewhite, May 9, 2004

Left: Owen Maloy with Falsewhite, making turns in nice corn snow. Above: Skiers with Mt Conness in the distance, Falsewhite bowl at left.

Mugelnoos

Pat Holleman
1638 6th Street
Manhattan Beach, CA
90266



Richard L. Henke
409 South Lucia
Redondo Beach, CA 90277
SMS RCS R 2004