

7/15 7/93

MUGELNOOS

APRIL 20, 1993

Number 702

SECRET REVEALED: SAN GORGONIO CONDITIONS RIVAL THOSE OF SIERRA!

On Saturday, April 3, 7 SMS'ers avoided a 5 hour drive and a cold night by a Sierra trailhead to find awesome ski mountaineering within a couple of hours of LA. For lack of an assistant leader, the official SMS trip was canceled earlier in the week. That didn't deter any of the participants, and Mark Goebel was kind enough to show us the way.

There was an unbelievable amount of snow! We had on skis and skins within a half hour of leaving the Barton Flats lot at about 9:00. Four pinheads, M.G., Mark Reed, Jim Valensi and myself were accompanied by three bombproof randonnee skiers, Elena Neubauer, Corey Hines, and Tom Campbell. The route was easily followed, marked by previous ski tracks. It was a good thing that we didn't have to rely on the ski trail markers. They tended to be at ankle level due to the snow depth!

After a leisurely lunch stop at "Slushy Meadows", we encountered the remains of an enormous avalanche, about 100 yards across (very sobering). About noon, we reached Dry Lake and were rewarded with magnificent views of Gorgonio and Mt. Charlton. The numerous bowls and tree covered slopes could certainly have kept us entertained all week. The large open NW face of Gorgonio, in particular, displayed a beautifully executed set of turns extending to within a few hundred feet of the summit.

After establishing camp on the East side of Dry Lake, we set off to carve up some snow. Elena and Corey headed for the steeper slopes of Gorgonio, while the rest of us smelled corn on the nearby slopes of Grinnell Mtn. (9722) We were not disappointed. A delicious, silky run in the afternoon sun was so much fun... we did it again!

Sunday morning we awoke to high winds (which apparently made it rather unpleasant in Mammoth), but they soon subsided and we set off towards Charlton Pk (10,815) to the SW. Corey and Elena were suffering from smog withdrawal and split for their car, while the rest lightened our packs and headed for the summit. The peak was windy and cold so we scurried back to the sunny East slope for some tasty shredding down to our packs. After a brief lunch, we decided that another run was in order and headed for the bowls on the West slopes of Gorgonio. The higher elevations proved windy, crusty and generally unpleasant. However, I was able to treat everyone to a display of the eggbeater pirouette technique. The run back to the cars was fast and uneventful and we were home in time for dinner.

Ken Deemer

THE MUGELNOOS IS A NEWSHEET PUBLISHED BY AND FOR THE SKI MOUNTAINEERS AND ROCK CLIMBING SECTIONS OF THE SIERRA CLUB'S ANGELES CHAPTER SINCE 1938. SEND SUBSCRIPTIONS AND ADDRESS CHANGES TO: PAT HOLLEMAN, 1638 6TH ST., MANHATTAN BEACH, CA. 90266. \$7 PER YEAR DUE IN OCTOBER. SUBSCRIPTION PAYMENTS ARE NOT TAX DEDUCTIBLE AS CHARITABLE CONTRIBUTIONS.

MUGELNOOS STAFF

EDITOR	ANDY FRIED
MUGELPRINTER	ANDY FRIED
MUGELMAILER	PAT HOLLEMAN
MUGELPROOFER	DIANN FRIED

NEXT MEETING

MAY 18, 1993 7:30 PM GRIFFITH PARK RANGER STATION AUDITORIUM 4730 CRYSTAL SPRINGS DRIVE, LOS ANGELES, CA.

NEXT ISSUE: MAY 18, 1993

ISSUE DEADLINE MAY 10, 1993 ALL PHOTOS, SLIDES, AND ARTICLES (TYPED OR 5 1/4' DISKS WP OR ASCII) SHOULD BE SENT TO: ANDY FRIED, MUGELNOOS EDITOR, c/o TEC GROUP 10727 WHITE OAK AVE. SUITE #205, GRANADA HILLS, CA 91344. IF YOU WISH TO HAVE PHOTOS RETURNED AFTER PUBLICATION INCLUDE A SELF ADDRESSED STAMPED ENVELOPE. WE ARE NOT RESPONSIBLE FOR LOST PHOTOS.

UPCOMING TRIPS:

Apr 17-18 Blue Couloir and Mammoth Tour Gerry & Pat Holleman
 May 1-2 Hilton Lakes Ski Camp Scot Jamison / Ken McElvany
 May 8-9 Ski Mountaineers Peak Gerry Holleman / Paul Harris
 May 15-16 Basin Mtn Ski and Ice Fishing Reiner Stenzel/Owen Maloy
 May 22-23 Mt Conness and Mt Dana Reiner Stenzel Scot Jamison
 May 28-31 Mt Shasta via Hotlum-Bolam Glacier Bill Lingle Nancy Gordon
 May 29-31 Mt Ritter, Thousand Island Lake Reiner Stenzel Howard Schultz

PROGRAMS

April 20 Rich Henke his adventures at home and abroad..

FOR SALE

PILE JACKET \$75
 PILE VEST \$40
 SYNCHILLA JACKET \$75
 SYNCHILLA PULLOVER \$70
 FEATHERWEIGHT PULLOVER \$65
 PRINTED (SPEARS) LIGHTWEIGHT SYNCHILLA T-NECK \$65
 SYBCHHILLA T-NECK \$50
 GUIDE JACKET \$150
 SEAL COAT RAIN JACKET \$85
 STORM PANTS \$150
 FEATHERWEIGHT REVERSABLE WINDBREAKER \$60
 LARGE DIFFLE BAGS \$30
 DAYPACKS \$20-\$40
 ALL ITEMS BRAND NEW (310) 547-2672

1992-1993 Ski Mountaineer Leaders

Walt Boge 13260 Cumston St Van Nuys 91401 818 781-4576	Bill Lingle 23660 Baltar St West Hills 91304 818 884-3269
Kathy Crandall 1864 Foothill Blvd La Canada 91011 818 790-9252	Marcia Male 1459 Westgate Ave, #1 Los Angeles 90025 310 479-0758
Craig Dostie 6438A Penn St Moorpark 93021 805 523-0413	Owen Maloy P O Box 2083 Mammoth Lakes 93546 H 619 934-9511 W 619 934-4553
Mark Goebel 9522 Innsbruck Dr Huntington Beach 92646 714 963-9384	Pete Matulavich 126 Calle Candida San Dimas 91773 714 599-6148
Nancy Gordon 6550 Ellenvue Ave West Hills 91307 818 884-8065	Ken McElvany 2058 Shorewood Upland 91786 714 982-4780
Paul Harris PO Box 70765 Pasadena 91107 818 577-4800	Eddie Nunez 296 Chesterfield Newport Beach 92660 714 644-0527
Gerry and Pat Holleman 1638 6th St Manhattan Beach 90266 310 374-4654	Don Pies 1606 Haynes Lane Redondo Beach 90278 310 318-6251
Scot Jamison 2517 King Way Claremont 91711-1720 H 714 626-1712 W 818 963-41 01	Howard Schultz 17045 Burton St Van Nuys 91406 818 344-8313
Greg Jordan 22633 Ticonderoga Rd Calabasas 91302 818 222-7466	Reiner Stenzel 519 Almar Ave Pacific Palisades 90272 310 454-9787

Road Conditions - (800) 427-ROAD

Up-to-date information on highway conditions throughout the state can now be obtained by calling a single toll-free number operated by Caltrans, which replaces 41 separate numbers that previously covered different parts of the state. Callers within California may dial (800) 427-7623 (ROAD) on a touch-tone phone to reach the Caltrans Highway Information Network. By punching in a highway number (e.g., 395) and the pound (#) sign, information can be obtained about specific highways within the state. A pre-

recorded message, which is updated as changes occur, will alert motorists to delays caused by weather, accidents or construction. Delays due to rush-hour traffic in cities are not reported. It is not necessary to wait for the introductory message to end.

[Source: Auto Club News.]

Mammoth to Tioga March 21-25, 1993 by Dan Anderson

Three skiers from San Diego chapter's Cross Country Ski Section skied from Mammoth Lodge to Tioga Pass Resort (TPR). They are Dan Anderson, Mike Fry, and Glenn Torbett.

To ease transportation, we sandwiched this trip between two other trips at the start and end points. The Mammoth trip was the snow camp for our chapter's Wilderness Basics Course (WBC). Our group skied in with packs Saturday on the Minaret Summit Road. We gave ski lessons and built an igloo and snow kitchen. The students had a blast and learned how to cope with cold weather camping! Sunday we skied to Minaret Summit where we left our students in the hands of another leader, Rob Langsdorf, for their return trip. Our goal was to ski to TPR to join a ski trip scheduled the following weekend.

Continuing up past Deadman Pass, we camped on the ridge at 11000' just south of Two Teats. We tried to save some effort by not skiing to Deadman Summit, but had extra trouble below due to slopes, bare spots, and pine thickets on the west side. Staying on the ridge would be easier. At night we had a terrific view of the night sky and of Owens Valley below. Early next morning the wind came up and knocked our tent down. After putting it up, the tent flapping kept us awake for the rest of the night. That morning, we quickly had breakfast in the tent and skied out of the wind. We traversed west around Two Teats and San Joaquin Mountain to a wide bowl on the NE side.

Traversing was difficult due to steep and icy slopes. In hindsight, the easy way is to contour west on the 10400' wide bench just above Deadman Pass. Continuing past an open area to a ridge just east of Agnew Pass, we looked down and saw several cornices hanging below 1000 Island Lake. Because of this and our reluctance to have another high and windy night, we decided not to ski over Island Pass. Instead, we skied down to Waugh Lake via Rush Creek. First, we skied east and around the ridge down to Clark Lakes. Our route stayed high as we skied west to Rush Creek to not drop down to Gem Lake. In theory, one can also ski down to June Lake from Gem, but the drop off below Gem Lake looks steep!

Refreshed from a warm and quiet night at Waugh, we entered Yosemite Park the third day via Lost Lakes Pass. We skied up to the pass via the east drainage and lakes. This route was more gradual than the west drainage recommended in Moynier's book. We were in high spirits after gaining 2000' with little difficulty as we approached

the pass at 11400'. Mike whipped his radio out and learned about 50-60 MPH winds from the noon weather forecast. This shortly proved true as we had difficulty standing up near the pass. The wind was at our backs pushing us up, but it was too overpowering to stick around! We quickly dropped down to the high Kuna Crest plateau to consider our options. We planned to ski around two ridges to the north and look down the Helen Lake bowl to see if we wish to ski down it. Previously, Mike reached two skiers by phone at TPR who skied the bowl the week before. They said it was corniced and had to walk it down. Because of this and the high winds, we decided to drop down immediately to Kuna Creek then ski out Lyell Canyon. However, we had difficulty skiing into Lyell Canyon because of high rocks and canyon walls. We traversed and climbed to the SE end of the canyon before dropping down. The last 400' we walked down as it was steep and icy and we were tired! We camped at the head of the canyon that night. Glenn brought a Global Positioning System (GPS) and plotted exactly where we were at this and other points but didn't need it on this trip due to good visibility.

Next morning, falling snow covered our snow kitchen, so we melted snow in our tent. The ski down Lyell Canyon was long but scenic and easy due to the terrain and wonderful fresh snow! We reached Tuolumne ski hut that afternoon and dried our stuff out. In summer, the hut is a campground reservation office and is immediately east of the summer grocery store. Eight bunk beds are available on a first come basis (rarely fills weekdays). The hut is free, has electric heat and lights and has a wood stove to melt snow. Two pay phones are outside. Two rangers are a mile east (phone 209/372-0366).

The last day we skied up the road to TPR. Although it snowed, the road was easy to find. It was a grind going up hill and our skis stuck. We reached TPR that afternoon and enjoyed a shower and home cooked meal (phone 209/372-4471). We also washed our clothes as they were very ripe from wearing Saturday to Thursday! We estimate the ski to TPR was about 40 miles. The last two days were the easiest yet was half the trip mileage.

The next few days we enjoyed skiing with just a day pack and with our friends. I took a day off and hung around the lodge reading magazines. Sunday we skied down to Lee Vining. It was snowing on top, but the last two miles we had to walk. Because of recent storms, TPR couldn't take our packs out, but most of the 20 other skiers never skied with a pack! However, everyone did well with some walking the more difficult sections. We reached our cars and drove home. If you have no car waiting, you can catch the bus from Lee Vining to Mammoth and points

south.

For those interested in skiing to Yosemite Valley (either from TPR or Mammoth), here's some details from a trip I skied two years ago. Other details are in Messick's book. Telephones are available at TPR, Tioga Pass, Tuolumne Ranger Station or the ski hut, and Tenaya Lake. Bathrooms at both ends of Tenaya Lake are kept unlocked for emergency shelter. Avalanche danger is on the road immediately west of Tioga Pass, on the road east of Tenaya Lake, and around Olmstead Point. Avoid the last area by skiing Old Tioga Road from Tenaya Lake to Snow Flat. The roads are gentle up and down. The most difficult (but fun!) section is the ski trail from the Snow Flat ranger cabin to the Valley rim. The route is marked with yellow license plates and does not always follow the summer trail. It traverses around Mt. Watkins then drops down to Snow Creek. The last part down to the creek is poorly marked. An interesting side trip is to the recently rediscovered Snow Creek Ski Hut. It is brightly painted and in the woods at the SW edge of a meadow. This hut is marked on the 7.5' topo. During the 1930's, the hut was used extensively and later forgotten. Local skiers rediscovered it in the 1980's. However, a ranger got suspicious when he saw the skiers hauling in an unusual amount of food up Snow Creek Trail and shut the hut down.

Once you reach the Valley rim, the walk is easy down the Snow Creek Trail, which receives enough sun to be mostly snow free. Sometimes one hears dramatic avalanches on the opposite side off Half Dome. From Yosemite Valley, a morning bus connects with a train, bus, or plane in Merced or Fresno to points south.

A Letter from Jim

Boy, did Jim Valensi take a beating in the last two Mugelnoos. Just for mentioning things like, "God Damn, new boots are bitch'in." Or other comments like...aah, F—k it or Sh—t. Just a product of the lost sheep of the TV generation.

I guess TV! Speaking of TV, Pete Matulavich's tube had the batteries doing double time. While Pete was out swingeling up the hillside in that creamy powder near Ostrander Hut, strange (or not so strange) things were heard coming from his TV. The sound was remembered as "I am gross and perverted, I'm obsessed and deranged, I have existed for years but very little has changed. I am the tool of the Government and Industry, too. For I am pernicious but you can't look away.

I make you think I'm delicious with the stuff that I say I am the best you can get. Have you guessed me yet? I am the slime oozin' out from Pete's TV set. You will obey me while I lead you and eat the garbage that I feed you until the day that we don't need you. Don't go for help ... no one will heed you for your mind is totally controlled. It has been staffed into my mold. And you will do as you are told until the rights to you are sold.

That's right, folks ... Don't touch that dial. Well, I am the slime from Pete's video, oozin' along, on the Ostrander floor. I am the slime from Pete's video. Can't stop the slime, people, look at me go." ***

Then mysteriously his machine switched back to a football game. I guess he was using those high altitude batteries and the TV was freed of it's inhibitions. We can change the saying the free your heels, free your mind, free your batteries, free your TV.

***With many thanks to Frank Zappa's I'M THE SLIME, copyright 1973

Ever Wondered What a Rescue Might Cost You?

Or whether your favorite volunteer mountain rescue group is likely to get reimbursed in this era of budget deficits and funding delays? I have, and was happy to learn about a private, voluntary, non-governmental, Mountain Rescue Emergency Fund (MREF). For \$15 donation per calendar year, you can be covered for up to \$2000 worth of rescue costs anywhere in North America. The non-profit, tax-deductible (IRS 501c3) Fund is run by the Alaskan Alpine Club, 3641 Sandvik, Fairbanks, AK 99709. You can also call Doug Buchanan directly at (907) 479-2149. They have a simple set of reasonable policies which is mailed with each receipt. Meet your public responsibility: contribute, and be careful!

-Peter Green, not affiliated in any way with the club or its MREF.

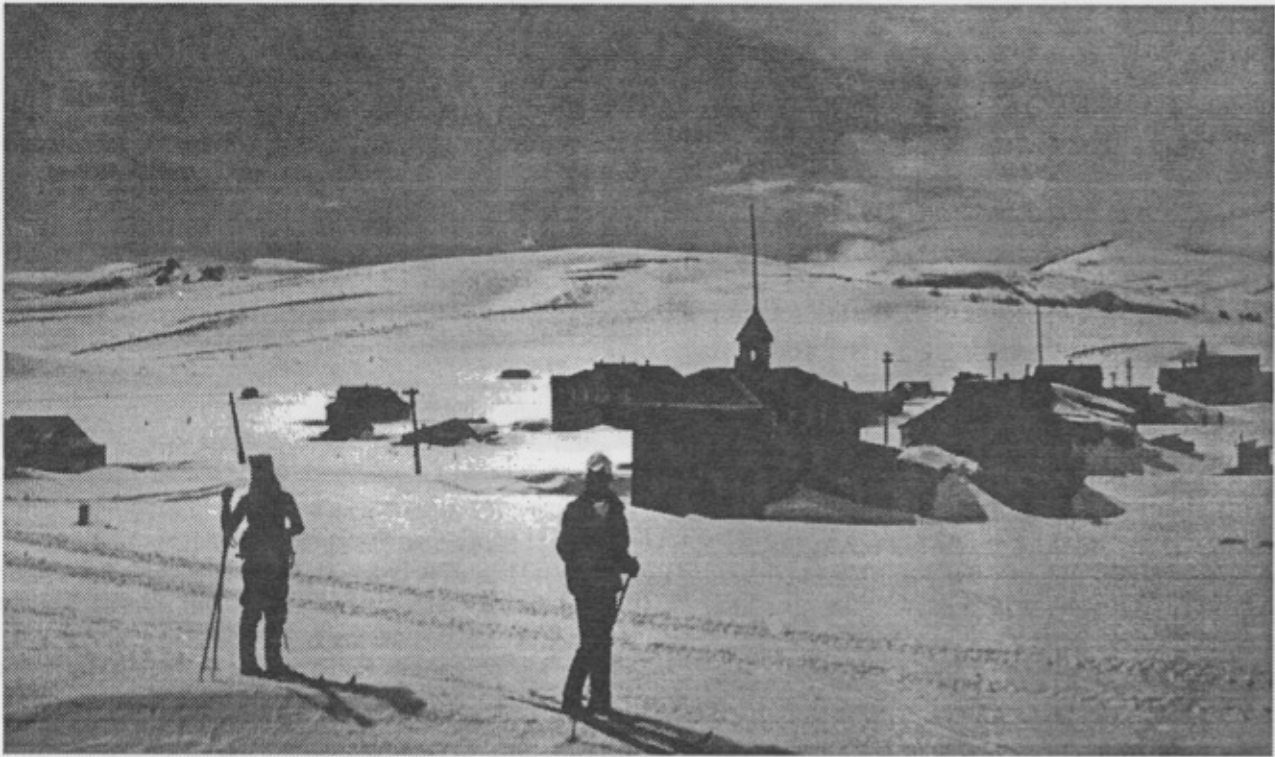
SKI FREE

Find out how in the pages of..



The backcountry skiers magazine

Available at Sport Chalet and R.E.I.



BODIE and BUCKEYE Mar 13-14, 1993

By Reirer Stenzel

Skiing to a ghost town in winter is a very special experience. In spite of a gloomy weather forecast four of us, Greg Jordan, Eddie Nunez, Mike Rector and myself, drove together up to Lee Vining where Ruth von Rotz from Reno -joined us. On sat. 8:30am we started north of Mono Lake from Hwy 167 (7 mi off Hwy 395) where an unpaved road leads to Bodie via Cottonwood Canyon. The first 2 mi were plowed so that it was only 8 mi with 1600' gain to Bodie (8,3701). Thus we did it in a day tour. Snow and weather were fine and by 12:30 PM we entered town along main street feeling like lone rangers in a deserted town with no soul in sight. We settled down in front of a saloon-like building near the closed ranger's office, ate lunch, relaxed and talked about the ghosts when quietly out of a dark building a man appeared. He was the ranger, but he did not talk much even though he gets visitors only every 2-3 weeks, and soon he disappeared again. Well, it is a ghost town. The only other living creature we saw was a cat with bleeding eyes. Then we skied to the cemetery which was covered with 4 feet of snow. Some crosses and a little angel poked out of the snow. We explored many buildings in town which, 120 years ago, had 10,000 inhabitants and produced \$100 million in gold. Bodie was also famous for its badmen, a wicked winter climate (-30 deg, 100 mph winds), 65 saloons, 3 breweries, high-tech power generator, cyanide pollution, a miners' union, a baseball team, etc. The longer we explored the town the more interesting it became. But by 3 pm we had to leave, and enjoyed our 8 mi ski/skating run down to the cars. We topped off this great day with a fancy dinner at the Bridgeport Inn. At night bad weather caught up and it rained on our showcamp near Twin Lakes.

Sun morning the weather cleared up and we skied from Doc & Als 3 mi into Buckeye Hot Springs. We all had our private natural pools and enjoyed our hot bath in a winter landscape. By noon we were back at the cars for the long drive home. We were very fortunate with the weather since the 16mi day tour to Bodie would not have been easy in a storm.

BALDY BOWL & HUT- MARCH 13-14 MARCIA MALE & PETE MATULAVICH

After leading the two Baldy Hut trips this year, I decided to reserve the Hut for the SMS annually on the first weekend of February and the second weekend of March. The response has been excellent and an easy trip to manage. For overnight beds, SMS'ers will get first dibs, then ASMC members, and then the many requests from other pinners, rondoneers, & snow boarders. The energy in the bowl this year has been a tremendous mix of ski styles with great camaraderie back at the hut. After this last trip, I also decided a group dinner does work best & will charge \$15 for the hut fee, munchies, dinner, & wine. Any balance will become a hut donation.

I find many skiers & hikers use the hut for daytime only & never leave a donation. Somehow this needs to be emphasized as the hut is in need of some major repairs after the flood damage. The roof also has been eaten through in parts by ravaged mice, improving ventilation, not yet a major problem, but soon it will be..

As of March 13-14., the snow was consistent from half-way up the trail. The snow above the hut has a hard base with 1-2 inches of corn on top. We found it faster to kick steps to the peak (1 1/2 hr) than to try & skin all the way up (2 1/2

hrs). With this consistent spring snow and light until 6 PM, the skiing & climbing is excellent right now. As in our last experience we awoke to pouring rain on Sunday due to a 40 degree night. But the rain stopped, the fog provided a breath taking dramatic day of views, & some pretty good snow. By 2:30pm, all participants had gone home & the sky was blue, so I headed up for a final awesome solo ski. The breeze was cool & the mountain silent. At about 2/3rds up the face (about lower chute level) it got harder to kick steps due to now shaded icy snow. I gave up bagging the peak again & headed for a sunny untracked face near Wedburgs Chute & wowed myself back to the hut on real fine corn . Just me and the raven. An exhilarating experience. Upon arrival I found Kurt Wedberg back in town with a few clients. He's off to Nepal to climb the lowest of the 8000 meter peaks. Our prayers & excitement are with Kurt for a safe & successful adventure.

John Wedburg showed on Sat. He's now officially retired as of March 12, & living in Bishop. What a Lucky Guy! The happy Participants were the five Critical care RN's Marcia Male leader, Fran Spector, Rose Lynch, Joy Goebel, & Diann Fried. Pete & Sara Matulavich, Tom Rondel, Steve Schumaker, John Bednarski, Dennis Landin, R.J. Secor, Mike Silverman, & Bill Lingle.

THE MUGELNOOS Pat Holleman 1638 6th St. Manhattan Beach, Ca 90266