

THE

MUGELNOOS

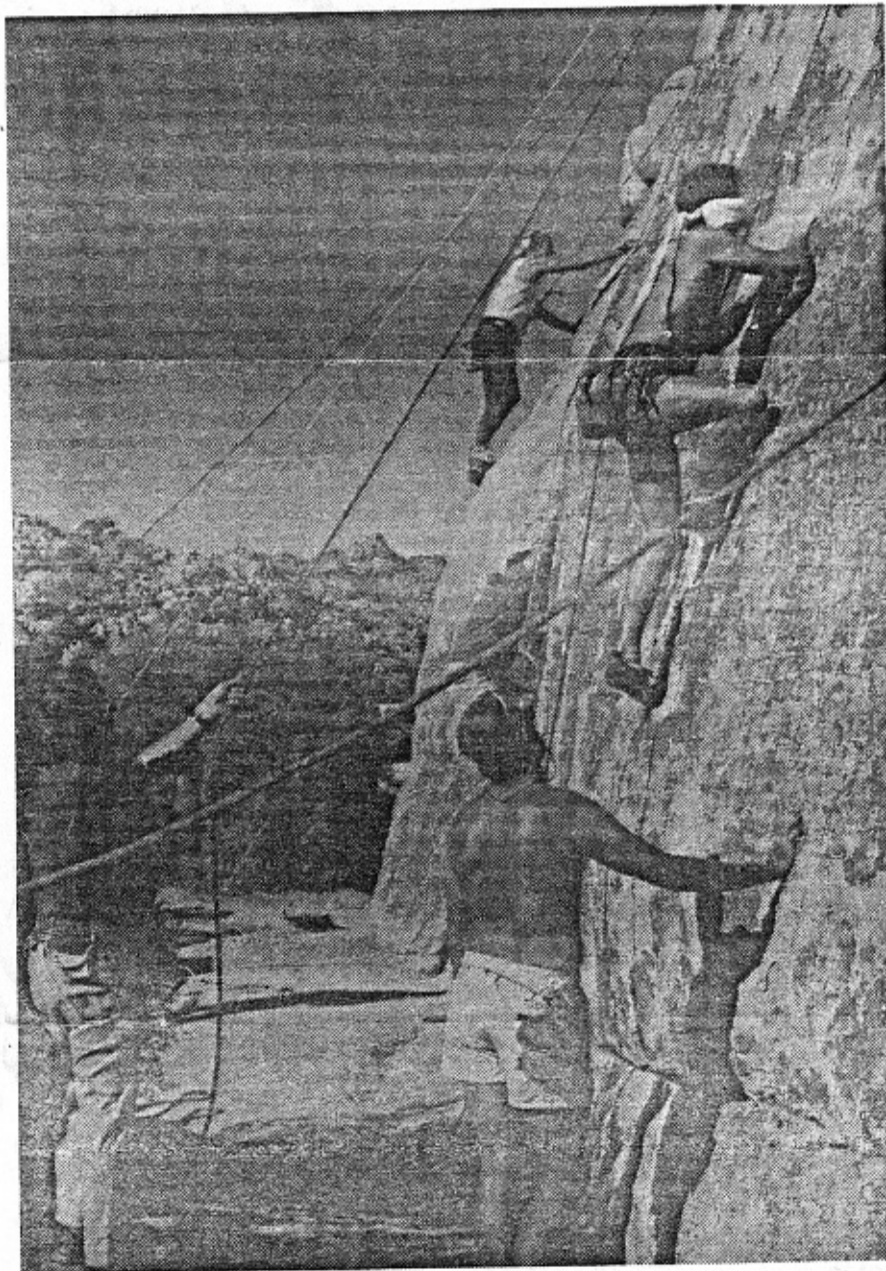
RT 11
28 Dec 88

#668 November 15, 1988

a 6 page issue.

A newsheet published by and for the Ski Mountaineers and Rock Climbing Sections of the Sierra Club's Angeles Chapter since 1938. Send subscriptions to Pat Holleman, 1638 6th St., Manhattan Beach, CA 90266. \$7 per year due in October. SUBSCRIPTION PAYMENTS ARE NOT TAX DEDUCTIBLE as charitable contributions.

This issue of the Mugelnoos includes news and information about the Southern California Mountaineers Association (SCMA), a rock-climbing and mountaineering group that might be of interest to readers of the Mugelnoos.



LEADING THE BLINDFOLDED—

Gerry Cox guides a blindfolded Mike Hearn while Dale Barringer belays Oct. 22 at Indian Cove. Mike top-roped Gotcha Bush (or something near it) sightlessly to get a feel for what kids from the Braille Institute Youth Center would have to cope with in the third annual Braille-RCS/SCMA trip.

"You pay a lot more attention to what people say" when you can't see, Mike noted.

Mike Baca is also seen, growing out of Gerry's head.

Others who helped were Gary Embrey, Dave Baldwin, Elaine Berke, Bill Thomas, Alan Lopez, Anna Hought Hearn, Bob Takahashi, Joe Wankum, Martha Leffel, Bob Carlson, Jean Jones, and Harry Freimanis.

MUGELNOOS STAFF

Editor Bob Carlson
 Editorial Assistant Virginia White
 Mugel Printer Leroy Russ
 Mugel Chairman Dick Smith
 Mugel Mailer Pat Holleman
 Reporters Tony Bird,
 Mikhail Jelf,
 Margo Koss,
 Paul Kenworthy

Next Editor: Paul Kenworthy
 P. O. Box 49581
 Los Angeles, CA 90049
 (213) 476-4100

Next Issue: December 20, 1988
 Copy Deadline: December 13, 1988
 Photo Deadline: December 6, 1988

NEXT MUGELNOOS MEETING

Tuesday, December 20, 1988 at 7:30 PM,
 Griffith Park Ranger Station. SMS Hosting.

MUGELNOOS RENEWAL NOTICE!

To renew your Mugelnoos for 1989, send a check for \$7.00 payable to "Mugelnoos" to the Mugelmailer: Pat Holleman, 1638 6th St., Manhattan Beach, CA 90266.

FUTURE EDITORS

DEC: Paul Kenworthy P.O. Box 49581 L.A. (213)-476-4100	90049
JAN: Joy Fagert 9522 Innsbruck Huntington Beach (714)-963-9384	92646
FEB: Pete Matulavich 1414 Paseo Manzana San Dimas (714)-592-2814	91773
MAR: Pat Holleman 1638 6 th Street Manhattan Beach (213)-374-4654	90266
APR: Rosemary Lynch 4075 C La Salle Culver City (213)-837-2299	90232
MAY: Andy Fried 9218 Jellico Ave. Northridge (818)-993-1891	91324

RCS SCHEDULE

The 1989 RCS schedule consists of two trips, created so paranoids can fulfill four activity days and not be forced to rely on the fairness of strangers should the section somehow be resuscitated later. Of course the trips don't include climbing, but plenty of fellowship and climbing safety will be on hand.
 April 1, 2:..Tahquitz, Jelf
 July 1-3:..Mystery Tour, Jelf

SCMA REACTIVATES

After a two-year hiatus while the RCS was once again active, the Southern California Mountaineers' Association has risen from dormancy. All RCS members in good standing should receive a mailing from SCMA Secretary Andre' Korbut-Weberg (address in Chapter Schedule) this month outlining membership details.

HAZING RITUAL

New members of the SCMA are expected to volunteer to edit a month's edition of their newsletter, Cliff Notes. Of course the odds are slim that any given volunteer will actually have to fill one of the few remaining vacancies. It's much safer than Russian roulette, so be sure to volunteer, lest your name be published as a non-volunteer and poor sport. Call or write Mike Jelf, 1819 W. 254th St., Lomita, CA 90717; (213) Davenport 6 3430.

SATURDAY NIGHT TURKEY POTLUCK
THANKSGIVING JOSHUA TREE TRIP
NOVEMBER 26-27

Dick and Margo will host the 7th annual Turkey Feast on Saturday night of the Southern California Mountaineers' Association (SCMA) Thanksgiving Joshua Tree trip. One large turkey (with gravy and stuffing) will be provided; everything else is potluck--bring your favorite holiday dishes.

The SCMA has Sheeps Pass site #1 starting Wednesday night.

REFORM SLATE SWEEPS R.C.S. ELECTION

The "Mikes Party" landslid into power unopposed with 100 per cent of the popular vote Oct. 18 at the annual election/purge of the R.C.S. at Crystal Springs Ranger Auditorium.

"All the voters who are popular with me voted for me," said newly elected section chairman Mikhail Jelf, through a spokesperson.

"This would be very gratifying if it meant anything, but of course if it did I'd have to resign," he added.

Popular mountaineering association president and pet advocate Mikhail Feldman rode a wave of popular hysteria and "I Like Mike" chants to unanimous selection as secretary and treasurer.

To the surprise of few observers, the new chair charted a change of course for the section: "Now that the reins of power are firmly in our grasp, we intend to bring safety to the zenith of R.C.S. goals by not climbing," Jelf told a silent gathering. "Our outings shall consist of walking around the bases of rocks — at a safe distance, of course — and encouraging any persons on the rocks to come down to earth like the sensible citizens Hyatt Regency wanted them to grow up to be: 'Hey, you up there,' we'll shout, 'come down, you'll get a nosebleed.'"

Asked what his first action would be as chairman, Jelf replied, "After visiting the local school to pray to an approved generic deity, I plan to have my people contact my predecessor's people, which will be convenient as I happen to be several members of both groups."

In an action which most Mugelologists say helps consolidate the new chairman's power, his old climbing partner and sometimes ally Mike Jelf was unanimously elected vice chair. The new vice chair would say only that he supports both vice and chairs.

Another move widely regarded to strengthen the position of the new chair was his appointment of his old patron Michael Jelf as "newsletter chair" or communications czar.

Other appointments, however, fuelled disagreement between analysts who think the reform group holds total power and those who believe pro-climbing traditionalists can still thwart the Sierra Clvb's metamorphosis into an indoors organization.

A case in point was the appointment of Mike Baca as outings chair, a post which lacked three legs hitherto. While some Mugelologists note Baca is a Mike, and say activation of the outings chair is evidence that the section will mount earthbound trips like other sections, others disagree that Mike was Hell on High Mountain winner for '88, and probably likes to climb. This second school sees his appointment as proof that reformers still lack utter control of the apparat, and that rival Mugelologists don't have enough legs to stand on.

The once-coveted post of safety chair was retained by Dick DeRuscha. The "limited control" school of Mugelologists sees this as proof that traditionalists still wield great deals of power behind the scenes. However analysts who believe reformers have won total control note that little safety chairing is needed to walk around rocks. They see his appointment as a sop to tradition.

Tim Frank was publicly named conservation chair in a reappointment which directly followed the chairman's election, amid rumors that Jelf was paying a political debt for Frank's withdrawal of his name from contention for the chairman's post. Analysts of both

(Continued on Page 4)

ELECTION (Continued from Page 3)

schools were in rare agreement on this: Frank's family wouldn't tolerate the extra load chairmanship would have placed on their telephone.

Controversy surrounded the appointment of outgoing chair Donna O'Shaughnessy as chapter council representative. Some observers see this as her final humiliation. Said one: "Once she left for her sightseeing trip she was removed from office and stuck into a ceremonial post which carries endless tedium, no power and not even much to stay awake about except the embarrassment of snoring." Her name wasn't even mentioned until this late in the election story in the official newsletter, he noted, adding that he should have been quoted about someone who would get play higher in the story. "This is one more example of the bias in Mugelology against those who recognize the modern reality that the Sierra Clvb has become like every other corporation," he added.

A different view came from a veteran Mugelologist who has seen many false springs and lumpy hot tubs over the years: "She'll be on an excellent stepping stone to the chair," he said, on condition of obscurity. "After all, that's where the new chair came from."

One point of agreement among Mugelologists was that the letter from Antonin Bird, read into the record by a Mike often rendered inaudible by either emotion or sesquipedalianisms, was the maudlin extremity of the proceedings. Bird was spared by acclamation. -MJ

FRESNO DOME, OCTOBER 1-2

A small but distinguished group enjoyed the first trip of the new season for the Southern California Mountaineers Association. Fresno Dome has gained many new routes (or at least newly-protected routes) since our last trip there, so that there is now a good selection of moderate to difficult routes of one to four pitches on lovely, clean granitic rock. In addition to the dome itself, there is a wall with a row of one-pitch face climbs from 5.9 (underrated--really 5.9+ or 5.10?) to 5.11, great for Sunday afternoon, plus another dome not far away that Greg Vernon was promoting. Because there are several moderate routes of reasonable length that are well-protected, Fresno Dome is a great place for novice leaders--two students from this year's RCS class did their first leads.

The weather was perfect, with temperatures in the 70s. Unfortunately, we climbed to the sound of guns all day Saturday, as it was the first day of deer hunting season. We all talked loudly when walking to and from the rock, to let the hunters lurking in the woods know that we were not deer. To celebrate our survival, we went to a Mexican restaurant just north of Oakhurst with good food, an incompetent waitress, and a great busboy (the busboy got the tip).

MK

MOUNTAINEERING FIRST AID

The American Red Cross (Valley Chapter) will again offer their popular *Advanced First Aid and CPR Mountaineering Course*. This is an intensive, hands-on course designed for mountaineering situations. It runs from February 28 to June 15, 1989 and involves Tuesday and Thursday evenings, along with some Saturday mornings. For information, call the Red Cross Education Office at (818) 376-1743. Will all of MY future climbing partners please take this course.

BC

Horse Flats Pulls 'Em Outa Woodwork

Seventeen--count 'em, seventeen--members of the late, great RCS turned out for late-season bouldering at Horse Flats Sept. 18. Several of this number, including (egad) the assistant leader, confided that at least part of their motivation was to rack up four climbs before the membership committee axe fell. The leader, even further from grace, was in it strictly for the climbing, which was far from disappointing.

The highlight of the day was the main climbing area at Horse Flats, which is hidden part way up a gully which leads from the entrance to the campground. If you can imagine a miniature Suicide Rock, this is it, complete with a tiny Weeping Wall, a little Root Canal-type formation and even a sort-of Paisano Overhang, a 5.11+ demonstrated with cool and aplomb by a local hardman named Sam.

This unfortunately came rather late in the day, as we spent most of the morning and early afternoon in the bouldering area southwest of the campground. There we top-roped and bouldered the sundry and unreportable and, oh yes, Ben Chapman did a fine lead on that tower which the leader backed off of a year ago. He agreed with the assessment "5.10 something," and was followed, in varying degrees of grace and tension, by Virgil Shields, Ruth Carter, Sue Ann Chapman and yours truly.

At the main area, Chapman led Ant Crack (ants had the day off), a 5.8, and others set up a top-rope boogie on Break for Daylight, a fun 5.7 jamcrack inside a chimney. Have to go back for those 5.10 face routes and another try at the overhang, now that Sam has shown us how.

Horse Flats is definitely a worthwhile day trip. The granite is probably the best in the San Gabriels, and the setting is forested and pleasant. A description and guide can be found in Climber's Guide to Southern California.

Tony Bird



This Bizarro cartoon by Dan Piraro is reprinted by permission of Chronicle Features, San Francisco, California.

ICE GEAR

Chouinard - used only 4 days !

60 cm Zero X axe w/ 2 picks	\$75
50 cm Northwall X w/ 2 picks	\$75
rigid step-in crampons	\$75
Chouinard and Lowe screws	\$10

Tom Brogan (714) 946-7011

SKI MOUNTAINEERS 1988-1989 SCHEDULE

Contact leaders for further information. See Sierra Club (Angeles Chapter) Schedule for phone numbers and information.

DATES	LOCATION	LEADERS
Dec 3-4	Mammoth Condo Leader Training	Owen Maloy, Kathy Crandall.
Dec 31- Jan 2	Ostrander Hut, Yosemite	Tom Duryea, Pete Matulavich.
Jan 7	Local Introductory Tour	Pete Matulavich, Paul Harris.
Jan 14	Cross-Country Downhill Clinic	Mark Goebel, Dick Smith.
Jan 15	Local Introductory Tour	Walt Boge, Paul Harris.
Jan 27-29	Ski Mountaineers Training Camp, Keller Hut	Mark Goebel, Paul Harris.
Feb 4-5	Mammoth Condo Weekend	Mark Goebel, Owen Maloy.
Feb 18-19	San Antonio Ski Hut	Pete Matulavich, John Wedberg.
Mar 4-5	Nordic Holiday Races/ Yosemite	Andy Fried, Gerry Holleman.
Mar 12	Local Tour, Experienced Skiers	Kathy Crandall, Mark Goebel.
Mar 18-19	Annual Wilderness Race, San Jacinto	Kathy Crandall, Dick Smith.
April 15-16	Onion Valley Area Ski Tours	Mark Goebel, Owen Maloy.
April 22-23	Ski Mountaineers Peak	Gerry Holleman, Paul Harris.
April 28-30	Pear Lake, Sequoia National Park	Kathy Crandall, Mark Goebel.
May 6	Mt. San Gorgonio	Mark Goebel, Dick Smith.
May 13-14	San Joaquin Peak	Nancy Gordon, Dave Dykeman.
May 20-21	Rock Creek	Joy Fagert, Gerry Holleman.
May 27-29	Ritter Range Ski Camp	Mark Goebel, Dick Smith.

THE MUGELNOOS

Pat Holleman
1638 6th Street
Manhattan Beach, CA 90266



San Francisco, CA 94102
San Francisco, CA 94102