

THE MOUNTAIN NEWS

No. 654 - October 21, 1987 A six-page issue.

A newsheet published by and for the Ski Mountaineers and Rock Climbing Sections of the Sierra Club's Angeles Chapter since 1938. Send subscriptions and address changes to Pat Holleman, 1638 6th St., Manhattan Beach, CA 90266. \$7 per year due in October.

BRAILLE KIDS AT J-TREE

AN ELEVATING TRIP

Seven RCSers fled quake-struck, heat-mugged LA to help blind kids experience rock climbing at Joshua Tree Oct. 3 and 4, and a fine time was had.

This first RCS trip with the Braille Institute Youth Center was blessed by wintry weather at Indian Cove (i.e., J-Tree was 10° cooler than Los Angeles), with Farenheits in the 90s. And it was dry heat.

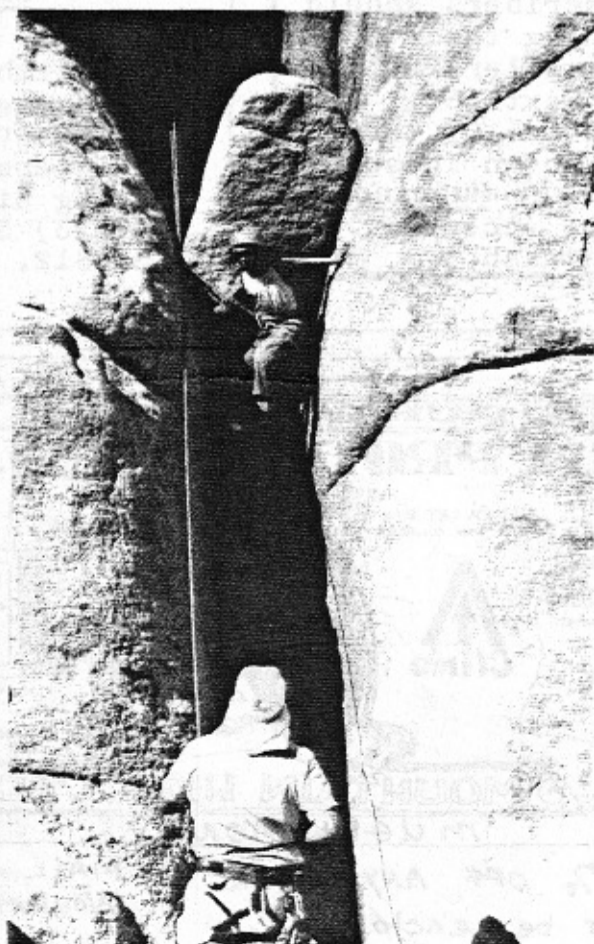
The youths, aged 10 to 19 years and nineteen strong, climbed top-roped routes on the Short Wall and lower Feudal from Class IV to 5.4. Fifteen Braille staffers and volunteers assisted.

Among those rendering distinguished service were Mike Baca, who arrived early to bag campsites adjoining the Short Wall for the Braille group. He accomplished this even though his faithful travelling companion, old yellow Carmen, lost faith and motivation in the resort spot of Johnson Valley, and was unable to move on. Mike even stayed on Saturday to belay and exhort his charges.

Gerry Cox climbed, coached and brought guest Patty Kurtz, who also helped with the climbs. Laurie Little, meanwhile, baked in the solar reflector oven called Chockstone Chimney.

Harry Freimanis arrived early and left late, after proving an enthusiastic and effective coach. Margo, who'd already made the Braille function possible by volunteering to lead the trip, made

(Continued,
back page.)



CLIMBING BLIND—
RCS member Harry Freimanis belays while Gerry Cox coaches Carmen Felix (left) on the Feudal Wall Oct. 4. At right, Harry belays and coaches Randy Flack Oct. 3 on the Short Wall's Chockstone Chimney. Nineteen kids from Los Angeles and Orange counties and Palm Springs enjoyed the outing

--RCS Photo

MUGELNOOS STAFF

Mugelprinter.....LeRoy Russ
 Mugemailer.....Pat Holleman
 Mugelchair.....Dick Smith
 Editor.....Mike Jelf
 Photo Editor.....Alois Smrz
 Reporters.....
 Rick Henke, Pat Holleman, Bill
 Krause, Mike Jelf, Greg Vernon,
 Pete Matulavich, John Orange

NEXT EDITOR: Mike Jelf
 1819 W. 254th St.
 Lomita, CA 90717
 (213) Davenport
 6-3430.

NEXT ISSUE.....November 18, 1987
 COPY DEADLINE..November 11.
 PHOTOS.....November 4.

SUBSCRIPTIONS....RENEW NOW —
 See front page.

MEETINGS: SMS/RCS meet third
 Wednesday of each month at
 7:30 p.m., Griffith Park
 Ranger Auditorium, 4730
 Crystal Springs Drive, L.A.

Free Heeling

The Nov. 18 meeting program
 will be "Freedom of the Heels,"
 a movie and slide show by Mark
 Goebel introducing the winter
 and spring skiing program of the
 Ski Mountaineers' Section.

FINAL NOTICE

Mugelnoos subscribers should
 renew NOW by sending their \$7
 cheques to Mugemailer Pat
 Holleman at 1638 Sixth St.,
 Redondo Beach 90266 (NOT the
 erroneous number shown in some
 recent issues), payee Mugelnoos.

Checks are also accepted, but
 please don't send cash.

C A L E N D A R

Oct. 24-5...Owens Ridge, Vernon/
 Shields
 Oct. 31-Nov. 1: J-Tree, Mundwiler
 /John Moore
 Nov. 7-8...Wagon Wheel, Vernon**
 Nov. 18.....SMS/RCS meeting
 Nov. 22.....Big Rock*
 Nov. 27-9.....Joshua Tree,
 Mundwiler/Koss++

*Leaders needed—call RCS chair.

**Second leader needed. Call
 listed leader.

++Thanksgiving dinner. See below.

J-Tree Campsites

Darral Freund reports these
 campsite reservations:

Oct. 30-31: Sheep Pass No. 1.
 Nov. 27-29: Sheep Pass 1, 4.

Fees are \$3 per person per
 weekend. Please take small bills.

Thanksgiving Feast

Dick and Margo will host the annual
 RCS Turkey Feed on Saturday Nov. 28
 at Joshua Tree. Margo and LeRoy
 will bring the turkey (on time this
 time). Others should bring their
 favorite goodies to share. Dallas
 RCS will be at Joshua Tree that
 weekend and has been invited to
 share camp and feast.

Abandon your tent for the luxury
 of a van! 1977 VW van w/ bed,
 table. Excellent mech. cond. Call
 LeRoy (213) 227-4973 or 222-0319.

Cinderella Story

A pair of kletterschues (i.e.,
 rock-climbing shoes) was found by
 Rich Henke Sep. 27 on the north
 face downroute of Tahquitz.

Cinderella may claim same by
 stating size and brand to Rich at
 (H)(213) 535-1817 or (W)(213)
 545-3812.



VALUE: 10% OFF ANY ORDER
 COUPON must be enclosed

MAIL ORDER ONLY
 NOVEMBER ONLY

PATCHES & PINS

Some skiers may not be aware of the handsome patches and pins available from the SMS. Both depict the 50-year-old SMS logo in four wintry colors: white, dark blue, light blue and gold. The patches, generally regarded as the most attractive of all Angeles Chapter section patches, are 3" across and look great on packs and parkas. The pins are 1" across and look good on ski caps and heck, even suit coat lapels, if people are still doing that sort of thing.

Patches are \$3.00. Pins are \$3.50. Help support and promote the SMS and send your check (made out to SMS) and S.A.S.E. to Pete Matulavich, 1414 Paseo Manzana, San Dimas, CA 91773. You'll be glad you did.

CENTRAL COMMITTEE MEETS

The SMS Central Committee had its first meeting July 29th, at Gerry Holleman's house in Manhattan Beach. Freeway shootings were down that evening and we all arrived safely. Pat Holleman provided plenty of wine and everyone did their part. I won't say who drank most of it, but it wasn't me.

Officers for this year and their positions are:

Gerry Holleman, Chairman	Owen Maloy, Treasurer
R.J. Secor, Vice-Chair	Eddie Nunez, Outings
Pete Matulavich, Secretary	Andy Fried, Programs

The following matters were discussed:

SMS Bylaws

Someone seems to think the bylaws need revised, so we spent several tedious hours going over the proposed revisions. Most changes were minor, if not picayune, and they will be presented to the membership for ratification at a later date providing everyone can contain their excitement.

New Members

Five new members were officially voted into the section. Each had been checked out last season. It would've been nice to have included their names in this article, and they were, but it seems the original article I wrote was either lost in the mail or misplaced by one of the Mugelnoos editors and I'm operating on a fuzzy memory. Anyway, each of you know who you are and it's too late to change your mind, so welcome to the SMS.

SMS Brochure

We all agreed that John Blumthal's SMS brochure was helpful in bringing in new members last season so we decided to continue it again this year. It'll remain the same except we'll switch to a whiter stock for better picture reproduction. Central Committee members will distribute the brochures to backpacking shops in their areas.

The Mugelnoos

It was agreed that we would ask Dick Smith, Mugelnoos Chairman, to please select SMS members to edit the Mugelnoos during the ski season, Dec - May. This will help insure better representation by the SMS and a more literate Mugelnoos.

If anyone has any comments or opinions about any of the above, or any other matter pertaining to the SMS, please feel free to contact a Central Committee member.

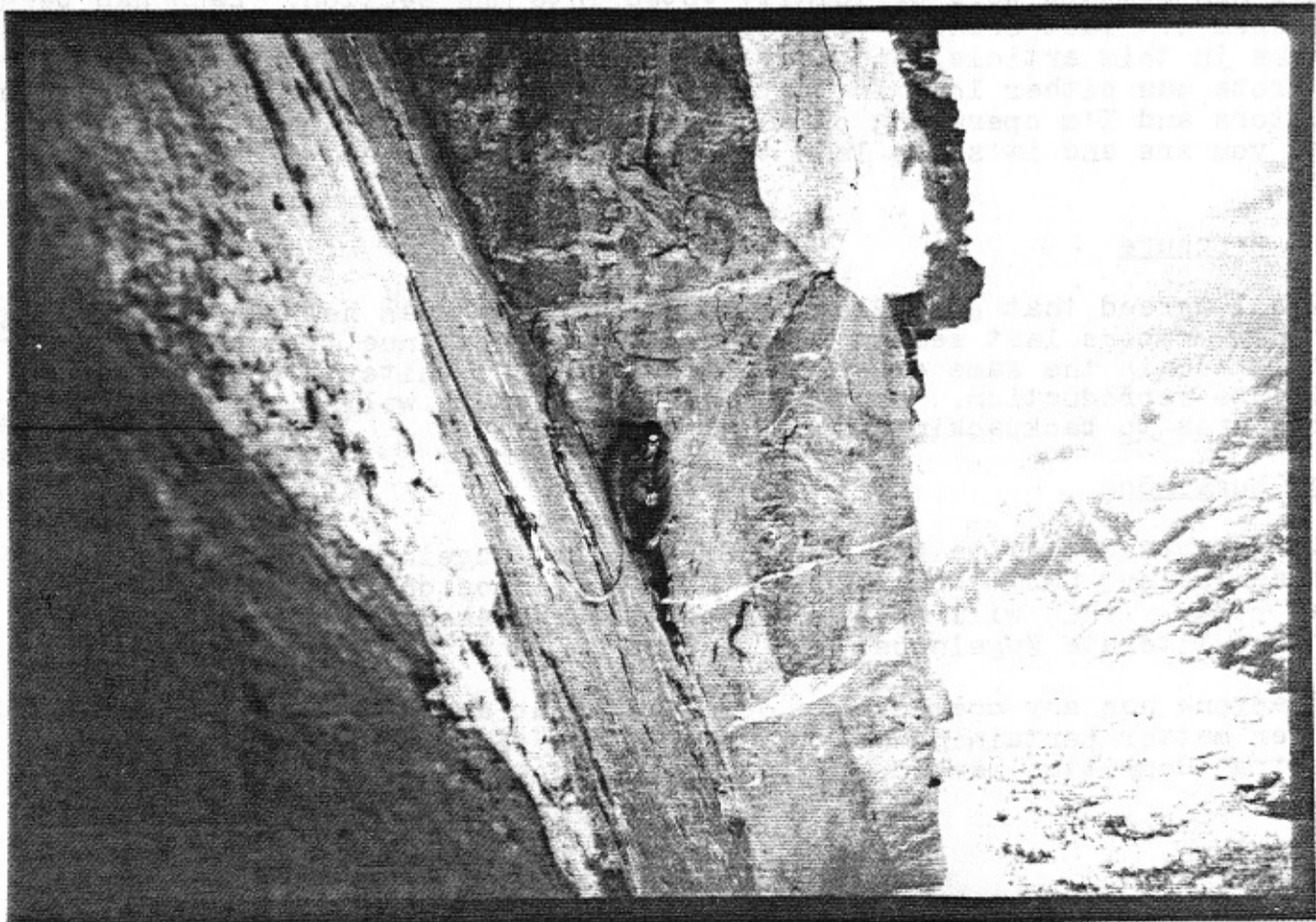
A Teton Rock Climb

The South Buttress of Mt. Moran contains some of the finest alpine rock in the Tetons. Several routes have been climbed on this massive buttress. The Direct South Buttress was the first route climbed and was a bold undertaking at the time of its first ascent. If the remainder of the South Ridge is climbed to the actual summit of Moran, this route is one of the longest alpine routes in the lower 48. A complete ascent of the Direct South Buttress and South Ridge will probably require at least one bivouac. Alois Smrz and I climbed the buttress only over two days in mid-August.

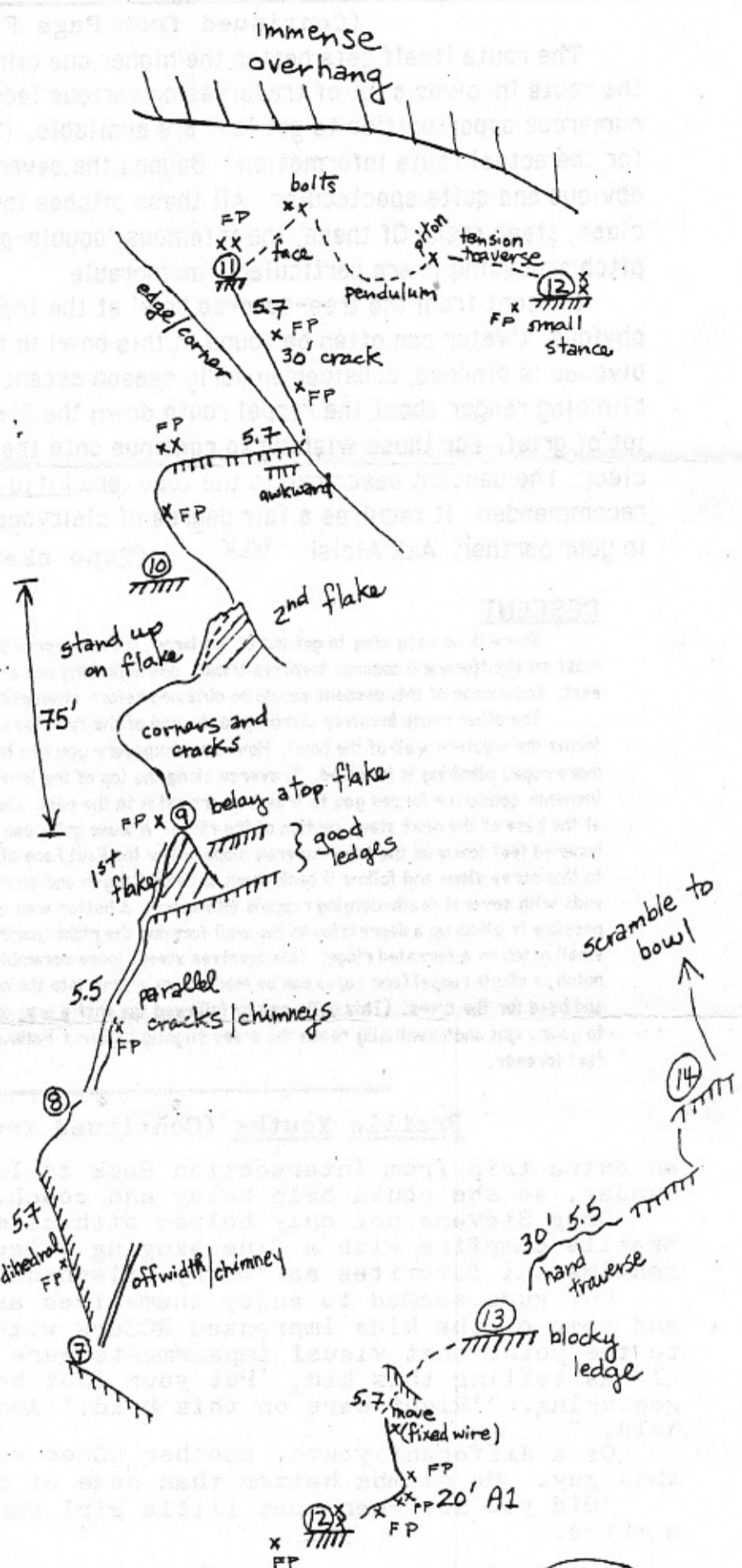
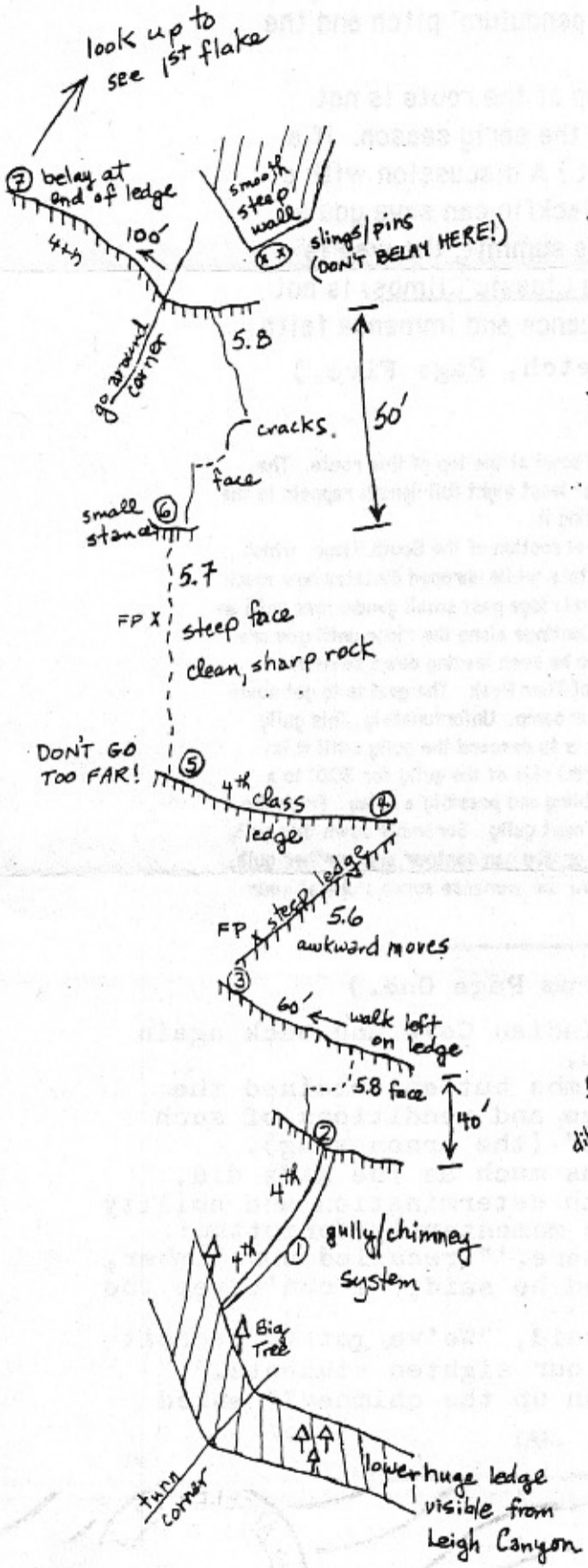
A few comments are in order. The approach is straightforward; however, be prepared to bushwack. The trail from the parking lot at the String Lake picnic area only takes you part way before you must leave it. You have a choice of either contouring around the north end of Leigh Lake (longer) or following the south shore to the inlet at the entrance of Leigh Canyon (wet). If I had to walk around the lake again, I'd follow the south shore. However, the best alternative is not to walk at all. If you can get your hands on a canoe (try renting one in Moose), then it's a simple matter to paddle across the lake to the inlet. A nondescript path can be followed on the north side of the creek for the next mile and a half to the talus slope below Laughing Lion Falls. Good campsites are available here.

The massive lower ledge which is followed to the start of the route is easily seen from this point. Many people have difficulty locating the actual point where roped climbing begins. Just remember it is located around the corner on the west side of the Buttress. This corner is easily seen from your campsite. A large tree marks the beginning of the steep gully system which is followed for the first two pitches. Resist the temptation to follow the ledge too far. It continues around the prominent corner for quite some distance. (Continued, back page.)

HANGING AROUND — Bill Krause (now a New Hampshire medical student) belays while Alois photographs on Mt. Moran.



Mount Moran Direct South Buttress IV 5.8, A1



WLK
8-87

(Continued from Page Four.)

The route itself gets better the higher one climbs. The first half of the route involves a lot of traverses on various ledge systems and so numerous opportunities to get lost are available. (See the attached topo for the actual route information.) Beyond the seventh pitch, the route is obvious and quite spectacular. All these pitches involve good climbing on clean, steep rock. Of these, the infamous "double-pendulum" pitch and the pitch preceding it are particularly memorable.

Descent from the tree-covered bowl at the top of the route is not obvious. (Water can often be found in this bowl in the early season. If a bivouac is planned, consider an early season ascent.) A discussion with a climbing ranger about the rappel route down the Blackfin can save you a lot of grief. For those wishing to continue onto the summit, the way is clear. The descent described in the topo (and Fifty Classic Climbs) is not recommended. It requires a fair degree of clairvoyance and immense faith in your partner. Ask Alois! WLK (Topo sketch, Page Five.)

DESCENT

There is no easy way to get out of the large, tree-covered bowl at the top of this route. The most straightforward descent involves tricky downclimbing and at least eight full-length rappels to the east. Knowledge of this descent should be obtained before attempting it.

The other route involves climbing to the end of the first level section of the South Ridge, which forms the western wall of the bowl. How much exposure you can take while unroped dictates how much more roped climbing is involved. Traverse along the top of the level ridge past small gendarmes until an immense gendarme forces you to traverse around it to the east. Continue along the ridge until you are at the base of the next steep section of the ridge. A loose gully can be seen leading down several hundred feet towards the tree-covered slope below the East Face of Thor Peak. The goal is to get down to this scree slope and follow it back down to Leigh Canyon and your camp. Unfortunately, this gully ends with several death-defying rappels into space. A better way is to descend the gully until it is possible to climb up a depression in the wall forming the right (north) side of the gully for 300' to a small notch on a serrated ridge. This involves steep, loose scrambling and possibly a delay. From the notch, a single rappel (one rope) can be made from a tree into the next gully. Scramble down this gully and head for the trees. (This gully can be followed the entire way or you can contour into another gully to your right and eventually reach the trees slightly higher.) Follow the immense scree slope at your feet forever.

Braille Youths (Continued from Page One.)

an extra trip from Intersection Rock to Indian Cove and back again Sunday, so she could help belay and coach.

Greg Stevens not only helped with climbs but entertained the Braille campfire with a fine singing voice and renditions of such sentimental favorites as "Merry Crispness" (the arson song).

Our guys seemed to enjoy themselves as much as the kids did, and some of the kids impressed RCSers with determination and ability to the point that visual impairments were momentarily forgotten: "I was telling this kid, 'Put your foot here,'" recalled one climber, gesturing. "'Right here on this hold.' And he said, 'I can't see the hold.'"

Of a different youth, another RCSer said, "We've got to recruit this guy. He climbs better than some of our sighted students."

"Did you see when that little girl ran up the chimney?" asked a third.

-MJ

MUGELNOOS
Pat Holleman
1638 Sixth St.
Manhattan Beach, CA 90266

Richard L. Henke
34 Malaga Place East
Manhattan Beach, CA 90266
1987 RCS-P

