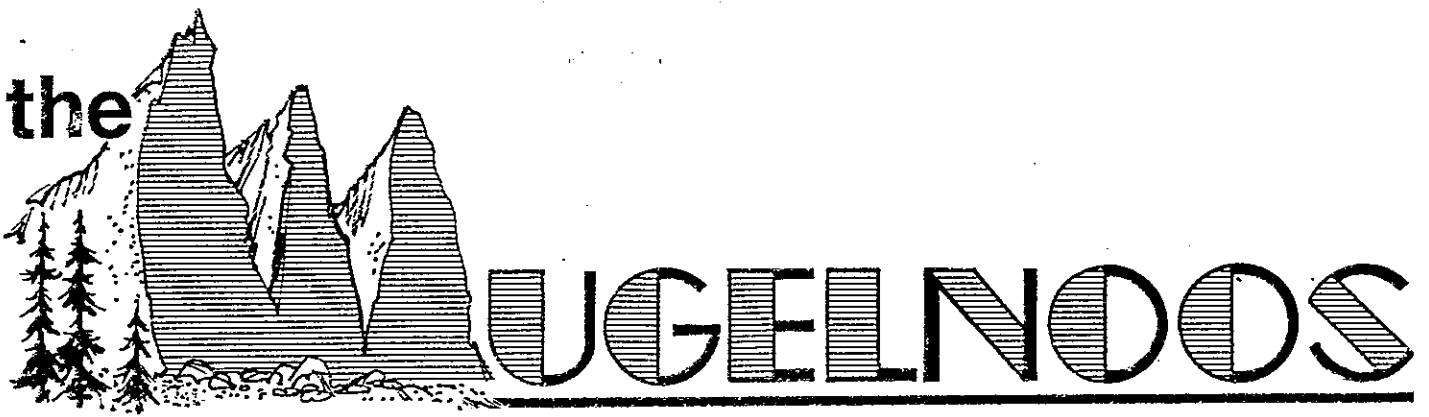


the



No. 614 -- February 21, 1984. A 4 page issue.

A newsheet published by and for the Ski Mountaineers and Rock Climbing Sections of the Sierra Club's Angeles Chapter since 1938. Send subscriptions and address changes to Dove Menkes, 2530 Coventry Circle, Fullerton, CA 92633. \$7 per year due in October. No cash accepted.

50th ANNIVERSARY PARTY AND SMS RACES KELLER HUT

1984 marks the 50th anniversary of the SMS--a group which was formed independently from the Sierra Club and later joined the Angeles Chapter. Two celebrations of our anniversary will be held this year--one in conjunction with the RCS 50th anniversary celebration at Harwood Lodge in the fall; and a warmup celebration in conjunction with the SMS ski races on March 3rd and 4th.

The often annual SMS races will be held this year on a professionally (digitally, yet) timed race course at Snow Summit. These races have traditionally been held in honor of Walter Mosauer, SMS founder and dedicated ski mountaineer. This year they also are dedicated to the memory of an extraordinary woman, Jackie Van Dalsem, who died on Mount McKinley last year.

Due to the incredibly good planning of the SMS Central Committee, the races will be held on machine-made snow at Snow Summit despite the most depressing drought in recent years, with Keller Hut as headquarters. There will be food, drink, merriment, and prizes, prizes, prizes.* In fact, prizes will be awarded in four separate divisions--men's and women's divisions of Alpine touring gear and of nordic downhill gear. Race time will be 1:00 on Saturday, March 3rd. Come early and get some practice in on the downhill slopes--snow coverage is reasonably good at Snow Summit. Your cost? \$19.95 for a lift ticket (less for a half-day ticket) and \$3.00 per night for Keller Hut.

Can't race? Sure you can! These races are for fun! There are no losers--only runners-up. OR--come and be a gate judge (did they really telemark at each gate?), be an official photographer, hold the hat for raffle tickets, and cheer the winners on! Eat a big spaghetti dinner after and help slice the cake on Saturday night! Be there or be square. Sunday's activities will depend on the success of the many prayers and dances being conducted to the weather gods during the next few weeks.

*Prizes have graciously been donated by Mountain 'n Air, Sport Chalet, REI, Evolution Alpine Systems, Dolt, Sports Hut, Hostelhaus, The Mountain Shop, A-16, Westridge, and Holubar. All these shops carry metal-edged nordic skis, and most rent them.

KC

JOSHUA TREE, JANUARY 14-15

A cold and windy Friday night turned into beautiful climbing weather on Saturday. About 35 climbers, a third of them women (!), participated. Indian Cove routes included Moosedog Tower Direct (Landry, Russell, Wong), La Reina (Landry, Hudson) and numerous routes on Short Wall, Feudal Wall and Campfire Crag. The shortest climb of the weekend was Shields' and Fowler's 10-minute (sign-out to sign-in!) ascent of Layback Crack. Talk about a token climb! Virgil was there taking photos for the climbing lecture he is putting together for BMTC. A roaring campfire and party on Saturday night lasted until... who remembers? (Some roared; all camped; a few lasted.) The early-morning litter of green and brown glass was cleaned up, and the group went to the Hidden Valley area. Routes done there included Hands Off and Mama Woolsey (Rutherford and Erb); Music and Chalk Up Another One (Vernon, Loomis) Run for Your Life and Sphincter Quits (Hudson, Watts); and Double Dip (5.7 lead for Sue Mason!).

RH

MUGELNOOS STAFF

EDITOR for February Margo Koss
MUGELGRAPHER LeRoy Russ
MUGELMAILER Dove Menkes
REPORTERS: Kathy Crandall, Mark Goebel,
Ron Hudson, Tom Jenkins, Robert Somoano,
Kent Withers, Andy Fried

NEXT EDITOR: Tom Jeter
321 E. Orangewood Ave. C7
Anaheim, CA 92802
714 750-2590

NEXT ISSUE: March 20, 1984
DEADLINE: Wednesday, March 14

MARCH SAFETY COLUMN: Fred Wing

MUGELNOOS MEETING: Tuesday, March 20, 7:30
pm, Dept. of Water and Power, Orange Room.
Film "Mountain Time, A Sawtooth Odyssey,"
skiing the Sawtooth haute route. Skiers,
climbers and guests all welcome!

C A L E N D A R

Ski Mountaineers

Feb. 25-26 - Baldy Hut: Mantle & Secor

Mar. 2-4 - SMS Ski Races, Keller: Crandall,
Goebel & Secor

Mar. 10-11 - Southern Sierra Ski and Snow
Camp: Fried and Gygax

Mar. 17 - Local Intro. Tour: Crandall

Mar. 24-25 - Inconsolable Range: Haas-Maloy

Rock Climbing Section

Mar. 4 - Mt. Rubidoux: Training Committee

Mar. 17-18 - Fossil Falls: Lindgren & Fried

Mar. 24 - Big Rock: Mundwiler & Burdett

NEW RCS MEMBERS: The RCS welcomes Steve
Dawson and Robert Oelsner to membership in
the Section.

RCS APPLICANT: James Weger has applied for
RCS membership. Anyone with comments regard-
ing his safety in climbing should contact the
Safety Chair, Margo Koss, by March 13, 1984.

RCS BACKCOUNTRY TRIP LEADERS: Leaders of
RCS trips into National Forest and Park permit
areas are responsible for securing permits.
The earliest date for obtaining permits for
1984 is March 1. Apply early, as getting
permits will be difficult this year. RS

MUGELNOOS SUBSCRIBERS: Mugelnoos is now \$7.
If you've sent in \$5, send another \$2 to
Dove Menkes (see top of page 1).

FOR SALE: Early Winters Winterlite tent--
Goretex, 4-season, mint condition, \$235.
Mark Goebel, 714 898-0894.

WANTED: Used climbing shoes for men's size
9-10 (for poor high school students).
Moderate remuneration available. Kathy
Crandall, 213 794-6491.

CHAPTER FUNDRAISING

Angeles Chapter's annual fundraising drive
will take place in March. Call the Chapter
office if you are willing to do some phone-
banking. Contribute if you can.

DON'T BE A LUDDYDUDDY

Don't be a jabber-nowl, be somebody! Get an
SMS patch. Thanks to the very great gener-
osity, in time and money, of Owen Maloy, the
SMS again has patches. These handsome items
are available to members for a mere \$2 each.
And the ever-popular badge is \$4. At meetings
or send SASE to Paul Harris, 1115 1/2 Maple St.,
Santa Monica, CA 90405.

RCS T-SHIRTS!

Yellow, with pocket. RCS on front, Half Dome
with climbing on back--"Rock Jock in Training"
\$10. Contact Andy Fried.

TELEMARK RACING

The Southern California Telemark Racing Series
is scheduled for Kratka Ridge on February 26,
and Mt. Baldy on March 18. If lack of snow
persists, the races will be held on those date
at Snow Summit. Race clinics will be conducte
the day before. Prices are excellent--\$65 for
two days of lift tickets, two days of race
clinic, and race entry fee. One-day clinic or
race only also an option. Call Chris Worthing
826-2545, for details, or the Snow Summit
Nordic Center.

MOUNTAINEERING FIRST AID COURSE

American Red Cross Mountaineering First Aid
(Advanced) course will be held in Sepulveda,
March 6 to June 26, Tuesday and Thursday,
7-10 pm. Pre-test required for enrollment,
given March 6. Call 785-6511 for information.

LTC FIRST AID COURSE?

The Angeles Chapter LTC is considering the
development of a first aid course placing
emphasis on hiking, mountaineering and skiing
injuries and illnesses. If you have medical
physiological, nursing, EMT, or other relevant
first aid background, and are interested in
participating in the new LTC program, contact
Duane McRuer, LTC Physiology/First Aid Chair,
357 S. Meadows Ave., Manhattan Beach 90266.

PERU MAPS

It has been difficult to obtain good topo maps
of Peru, but now complete sets are available,
including peaks and approaches. Contact Bill
Stewart, 119 Brandview, Ann Arbor, MI 48103.

EXUM HUT BLOWN AWAY

The Exum Hut on the Lower Saddle on the Grand
Teton has blown down in September. The Exum
Climbing School plans to replace the hut.
In the meantime, marmot caves? AF

WHERE WERE YOU?

Where were you at 8:30 am on Sunday, February
5th? Ten or twelve RCS'ers turned out to hel
the 50 or so students who attended the fourth
training class at Mt. Rubidoux. Due to the
limited number of volunteer instructors, only
two practice climbs were set up (5.2 and 5.10
At least one student can climb 5.10!

WE NEED YOUR HELP. With another 6 or 10
instructors, we will be able to set up more
practice climbs and provide pit-stop relief
for instructors.

The final practice climb is March 4 at Mt.
Rubidoux. Please come to Fossil Falls on
March 17 and 18. It is a fun trip, and we
may be short-handed this year due to a confli
with the BMTC schedule. This is your chance
review this year's class for potential climbi
partners! KW

RCS STUDENTS: When your Proficiency Card is
all signed off, send it to LeRoy Russ, 4225
Via Arbolada #557, Los Angeles 90042.
If you have forgotten your Fossil Falls bus
pickup location, contact LeRoy at 213 227-497

AUTHORS: We need you, for a fatter Mugelnoos
next month!

NEW GRAPHICS: Thanks to David Raymond, an RC
Proficiency ratee, for the new masthead for
the Mugelnoos! MK

HANGERS, BIG TOE-LITTLE TOE, AND TEA TRAYS
JANUARY 27-29

Eighteen skiers turned out for this year's SMS Training Camp which was held at Keller Hut and on the slopes of Snow Summit Ski Area. Activities for the weekend began Friday evening with slides of early season powder tours in the areas of Mammoth and Yosemite to spark enthusiasm for the main event, ski instruction.

Saturday morning we journeyed over to Snow Summit and met the three professional instructors, who quickly divided the group into beginner, intermediate and advanced, and then set off on the first of two formal ski sessions for the day. During these sessions, the instructors were assisted by SMS instructors Kathy Crandall, Kathy Johnson and Mark Goebel.

We were all very impressed by the facilities and skiing at Summit. (The women's pro ski racing tour will stop there February 25-26. The young LA crowd does make for some wild skiing in the fast lane, so Beware!) Seven lifts were running, 95 percent of the runs were open and covered with machine-made snow. The snow was firmly packed, but usually had a soft top layer. All very skiable! Since there was no natural snow available locally, it was a smart move changing the Camp from San Jacinto to Summit. Another advantage which many backcountry skiers do not realize is that groomed slopes combined with chairlifts provide the best and easiest way to learn or improve ski technique. Also, by using ski area instructors, lift lines can be cut, increasing skiing time.

The year's camp continued to be oriented toward teaching regular downhill technique while using nordic mountaineering skis, with a strong emphasis on the "new" telemark turn. If you are wondering about this article's title, it all refers to descriptions for initiating the telemark, edging and body positioning. As for the "new" telemark, sign up next year and find out, or arrange a lesson from Summit's nordic department.

Activities continued at Keller during the evening with a ski tuning demonstration, a discussion on avalanche avoidance strategies, repair kits, and more backcountry skiing via slides.

Sunday saw 14 skiers returning to Snow Summit's slopes for lesson reinforcement, additional instruction and hints from the SMS team, and lots of fun skiing. We also did some ski testing by trading off among the group. The Phoenix "Wilderness" received many raves as an excellent "all-purpose" hard pack and soft snow ski. By day's end, the instructors were gratified to see improved skiing skills, and lots of controlled turns as happy skiers finally put it all together. Oh the joys of teaching! We encouraged and expect to see some of these people turning out for regular SMS tours. I personally came away feeling very pleased with the weekend's results, and thanks go to all who participated, brought firewood to the Hut, and assisted with Hut chores.

A final product of the Camp will enable the Section to underwrite the SMS's 50th Anniversary ski race for its members on March 3rd. See you at Summit.

MG

BIG ROCK, JANUARY 28

The Santa Ana winds were heavy in the passes at 6 am, but the area around Big Rock was calm by 8 and remained so most of the day. It was sunny and warm once the sun hit the rock. Having obtained a gate key and permission from the Rangers to take a vehicle in for emergency use, the small group who arrived at 8 drove to the base of the rock. Bob London made a fine lead of African Flake Direct, with trip leader Tom Jenkins climbing second and Jerry Achstatter third. More climbers trickled in as the day advanced; 24 climbers climbed 34 climbs. Daisy chains reminiscent of the annual picnics were observed on the popular lines. All climbs were completed without incident. Around 5 pm, Teresa Rutherford followed Bob Landry up Let It Bleed, the grand finale of the day. Maureen Powers was seen only on the "picnic table lieback," which she skillfully climbed via the "open book." This must have included Class 6 ice, as she was heard asking for a corkscrew. Leader was pleased to see more attention being paid to helmets and seat harness belt tightness, but more example-setting by active members is still needed in both areas.

TJ

DON'T DRINK THE WATER

Giardia Lamblia got an unwary RCS member in Sequoia. Is nothing sacred? Boil the water, up to 5 minutes for turbid water (water with much suspended material).

AF

From Off Belay, December 1974, by Lon Rayburn and Paul Boving:

You know you've had a hard day climbing when...



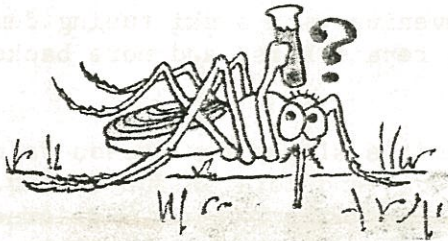
You can no longer recall just why you took up climbing in the first place.



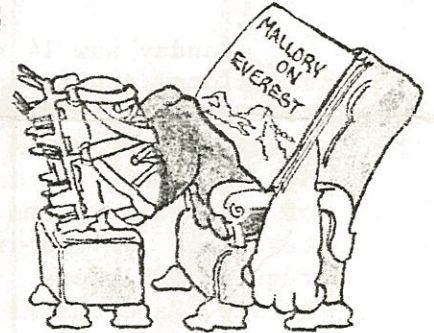
You decide the route couldn't possibly go that way,...but there's no where else it could go.



You close your eyes for a minute, and wake up three days later.



The mosquitoes decide you've become too anemic to bother with.



You decide that "because it's there" is a lousy reason for doing anything.

69

THE MUGELNOOS
Dove Menkes
2530 Coventry Circle
Fullerton, CA 92633

Stamp



~~USA 20c~~

Don Pies
4619 W. 130th Street
Hawthorne, CA 90250

130 ST.

RCS M

SMS M

c-51

PIE 19 51027401 03/02/84

PIES
2021 CLARK LN
REDONDO BCH CA 90278-4205